

FORSTER RED ANGUS

RAISING REGISTERED RED ANGUS SINCE 1967

ANNUAL PRODUCTION SALE
FEBRUARY 11-16, 2025

SELLING 80 COMING 2-YEAR-OLD BULLS



LOT
1

FORSTER RECON 3051

Online Auction ONLY

DVAuction
Broadcasting Real-Time Auctions

www.dvauction.com

HOWDY FROM THE FORSTERS

FR

We are proud to celebrate our Annual Production Sale with you. We have been providing the industry with reputable genetics for 58 years. I would like to give an extended thank you to all our friends/customers, and family who make this possible for us.

This is our third year doing an Online Auction Only Sale. It's going to go through DVAAuction, and you will need to register prior to bidding at www.dvauction.com. The bulls will be available for viewing in their pens from February 11-16, 2025 at the Forster Ranch. If you are unable to make it in this time frame, you are more than welcome to stop by the ranch at any time to view them. Bidding will open on Tuesday, February 11th at 8:00 am MT and will close Sunday, February 16th at 4:00 pm MT. Extended bidding will start at 4:00 pm MT or 5 minutes prior. This means if there is a bid at 3:55 pm MT, bidding will stay open on ALL lots for another 5 minutes. This will continue until no more bids are being placed. There must be a 5-minute period with no bids before bidding closes. We are happy to take bids for individuals that are not able to do so on their own or need help with the bidding process.

These bulls were born in late spring of 2023 and weaned in November with no creep. They are put on a high roughage diet until spring. The calves are then turned out to pasture like summer yearlings. Prior to the sale we will supplement them some to get ready for sale day. Our bulls are grown out and NOT finished out. Forster Red Angus believes this will ensure a better breeding bull that will have less maintenance and breed more cows for a longer servicing career. We have a lot of customers that continue to compliment us on how well our bulls stand up and how long they last.

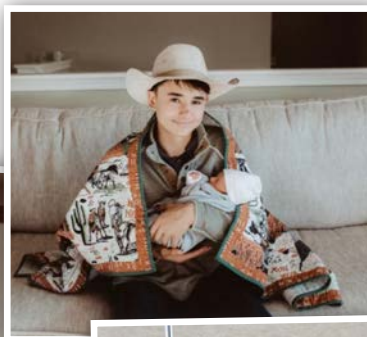
In 2024 I was blessed with 3 new grand babies! Kaitlyn & Clint welcomed a daughter in January, Kutler Jaymes Gorrell. Libby & Tate welcomed a daughter in September, Mikey Jane Kick. Zane & Melissa welcomed a son in November, Lawson Timber Forster. Zane & Melissa are living in Dickinson. Melissa is a hair stylist, and Zane is still hauling cattle. Donny was excited to finally get a baby brother! He is a sophomore in HS this year. Seth & Jaylea keep themselves extra busy at their full-time jobs and are now the owners of the Pheasant Bar & Grill in Mott, ND. Carter is a 4th grader and is a sports fanatic! He is busy playing basketball this winter. Anastasia is a 3rd grader and enjoys drawing and is in her first year playing basketball. Adriana is a 2nd grader now and loves all things girly! Clint & Kaitlyn are busy on their cattle ranch in Beach, ND. They also breed and train Registered Quarter Horses, selling a few colts a year from their stallion. Clint recently won Reserve Champion Header in the NDRA and made the Badlands Circuit Finals taking 3rd in the Average. Kaitlyn is enjoying barrel racing and traveling as a family to rodeos. Their kids, Vann & Kutler, are fun little helpers on the ranch and keep them on their toes. Tate & Libby are still living in Dickinson and working their same jobs. Libby has been extra busy with her photography business and making ads for me. Dak is a 1st grader and is a huge sports boy! He plays soccer, basketball, and jiu-jitsu. Mav has started pre-school and was finally excited to start soccer! They are over the moon excited to have their baby sister, Mikey! Grandma Sally is doing great. She was awarded the "Lifetime Breeder Award" at the ND Red Angus Association 60th Anniversary banquet.

If any of you need help in your selection, feel free to let us know and we will be more than willing to help you out in any way we can. You are also more than welcome to stop by the ranch and view our cattle at any time.

We look forward to seeing you at the sale!

Sincerely,

Ken Forster & Family



"OUR CATTLE ARE A PART OF WHO WE ARE, NOT JUST WHAT WE DO."

➤ GENERAL INFORMATION ⇐

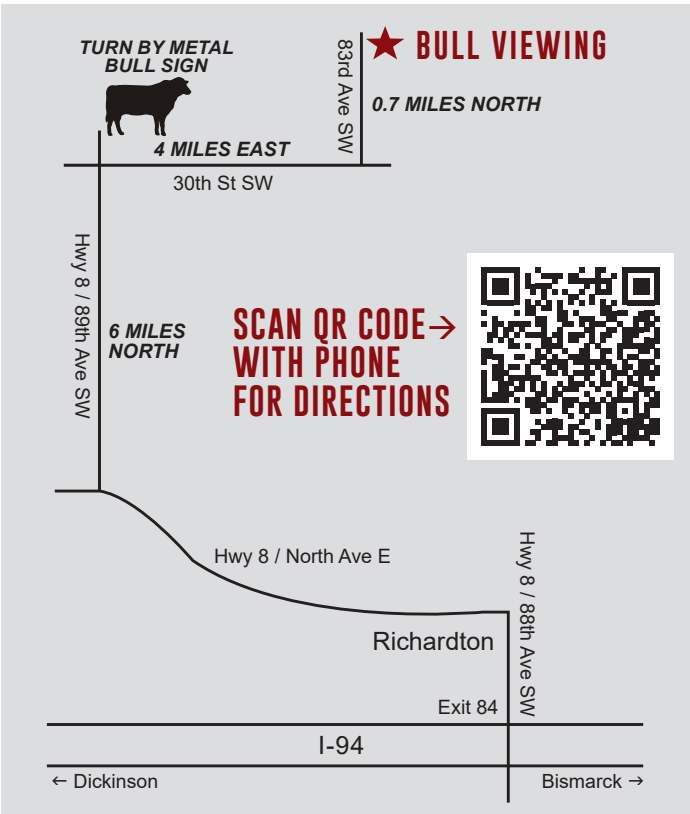
BUYER REGISTRATION:

All buyers must register on www.dvauction.com to bid.

View Sale Catalog Online at www.forsterredangus.com

LOCATION:

8285 30th St. SW, Richardton, ND 58652



BRAND INSPECTION:

Health and brand will be provided by Forster Red Angus for USA animals.

SALE CONSULTANT:

Ken Forster H: 701-974-2450 • C: 701-290-2450

LIVESTOCK INSPECTION:

All bulls can be viewed in sale pens from February 11-16, 2025. If you can not come in that time frame, you are more than welcome to call and check out the sale offering prior to the sale.

EXTENDED WARRANTY/

LIVESTOCK INSURANCE: Bull injury & mortality insurance is available. Northland Insurance will supply. Contact Joana Friesz -701-400-8744
Email: joana@northlandinsuranceagency.com

AMERICAN RED ANGUS ASSOCIATION

940-387-3502

Rachael Oliver, RAAA Commercial Marketing Specialist
406-480-1569 (cell)

TELEPHONE BIDS:

We guarantee sight unseen purchase satisfaction, if preapproved by Forster Red Angus, prior to sale. Bids will be handled in strict confidence by any of the sale staff or Ken Forster.

TELEPHONE:

Kenny 701-290-2450

Seth 701-690-2396

Kaitlyn 701-290-8889

TRANSPORTATION:

Dickinson • 22 miles west, Theodore Roosevelt National Airport • 701-483-4221 or 800-241-6522

Bismarck • 75 miles east, Executive Air Airport • 800-932-8924

HOTELS - DICKINSON, ND:

Quality Inn & Suites 800-424-6423 • 701 225-9510

AmericInn 800-634-4444 • 701-225-1400

Comfort Inn 800-228-5150 • 701-264-7300

Select Inn 800-641-1000 • 701-227-1891

Super 8 Motel 800-800-8000 • 701-227-1215



WWW.
forsterredangus
.com

➔ GENERAL INFORMATION ⇐

ABBREVIATIONS AND EXPLANATION OF TERMS

C.Ease-Calving Ease Code: Calving ease continues to be a concern for those breeding heifers. WE have tried to provide as much information as possible with EPD's, actual birth weights and a star code system. The star rating for each bull is based on the best information we have available on both individuals and their close relatives. Remember to take into consideration your own cow herd genetics, environment, feeding conditions, etc., will have a big influence on your birth weights.

* **Use on cows**

** **Use on cows or growthy heifers**

*** **Few calving problems should occur when bred to first calf heifers**

HB: The probability of developing profitable cowherd traits while maximizing the value of marketed progeny.

GM: The probability to increase the value of marketed calves.

Act. BW: The animal's actual birth weight.

BW Ratio: The ratio of an animals BW to the others in its birth contemporary group, 100 being average.

Adj. WW: Weaning weight adjusted 205 days.

WW Ratio: The ratio of an animals AWW to the others in its weaning contemporary group, 100 being average.

YW Ratio: The ratio of an animals AYW to the others in its yearling contemporary group, 100 being average.

ADG Ratio: Is the gain from WW to YW and compared to others in their yearling contemporary group, 100 being average.

SC: Actual bull's scrotal measurement in centimeters.

Ultra Sound Carcass: Scan data taking as yearlings for IMF:R, RIB:R, and Back Fat.

% IMF:R: Is the marbling ratio, compared to others in their yearling contemporary group, 100 being average.

REA:R: Is the ribeye ratio compared to others in their yearling contemporary group, 100 being average.

FAT:R: Is the back fat ratio compared to others in their yearling contemporary group, 100 being average.

MPPA: Based on Dam's past productivity. For example, a cow's MPPA for weaning ratio is calculated from the cow's average progeny weaning ratio, the number of her progeny with weaning record, and the repeatability of weaning weight.

TERMS AND CONDITIONS

Terms: Cash and settlement must be made immediately after the sale.

Disputes: The auctioneer will settle any disputes as to bids and his decision on such matters shall be final.

Handling: As sale is affected, all animals will be maintained at the purchaser's risk.

Announcements: Any of these made sale day take precedence over printed material.

Semen Interest Retained: This means purchaser buys the bull for what he bids and gets 100% possession and 100% resale value of the bull when he decides to sell him. It does give Forster Red Angus the option to collect, use and market semen from the bull and does not restrict purchaser from doing the same. The revenue from semen sales will be shared by the parties with semen interest after the cost of collecting and marketing of such semen. This collection, unless agreed to otherwise, would be done at the expense of Forster Red Angus and the purchaser's convenience.

Seller's Semen Rights: A 1/2 (one half) semen interest will be retained in all bulls by seller. In the event if seller elects to collect semen from a designated bull, it will be done at seller's expense during such time when purchaser is not using the bull for breeding. On all bulls the buyer receives full possession and full salvage value.

FERTILITY TEST: These bulls are guaranteed breeders. They have all passed a breeding soundness evaluation, including a semen test by a certified veterinarian.

Dam's Age: The dam's age at the time of calving.

CED: The calving ease direct EPD is the probability that an animals calves will calve unassisted to a two year old dam.

BW: The birth weight EPD is measured in pounds of weight differences at birth.

WW: The weaning weight EPD is measured in pounds of weight difference at a 205 day weaning age.

YW: The yearling weight EPD is measured in pounds of weight difference at 365 days of age.

Milk: The milk EPD is the weight difference at 205 days which can be attributed to the milk production and female characteristics of the daughters of the animals.

TM: The total maternal EPD is the total weight difference at 205 days which can be attributed to the dam of an animal alone.

ME: Mature Cow Maintenance Energy Requirement- Predicts cows who have lower energy requirements and will eat less than cows with higher requirements at the same level of production. Low numbers are desirable.

HPG: The heifer pregnancy EPD measures the percent probability that an animal's daughters will calve, as a two year old.

CEM: The maternal calving ease EPD is the probability that an animal's daughters will calve unassisted as two-year olds.

STAY: The stayability EPD is the probability that, after an animal's daughters enter the cowherd, they will remain productive until at least six years old.

MARB: The flecks of intramuscular fat (marbling) is the rib eye muscle between the 12th and 13th rib. Marbling is the most important factor in determining quality grade and is associated with product palatability.

REA: The rib-eye EPD is the difference in square inches in the size of the longissimus muscle (the ribeye muscle, as measured at the 12/13 rib) of an animal's progeny. It is a component in the calculation of carcass cutability or yield grade of percent retail beef.

BFAT: The backfat EPD is the difference in inches in exterior fat thickness in the progeny of the animal. In carcasses, it is measured at the 12/13 rib for ultrasound measurements. It is the most important component in the determination of cutability or yield grade of percent retail beef. It also represents fat which may need to be trimmed off.

Guarantee: Bulls are guaranteed breeders. All claims must be submitted in writing to the seller with seven months of sale date, along with semen evaluation and health report, at buyer's expense, from a certified veterinarian. Seller shall have the privilege of trying the bulls after his return before making an adjustment. This guarantee is void if there is evidence of improper management in caring for the animal, or the bull's inability to breed is due to sickness or injury which was incurred after being sold. Heifers are guaranteed to be open and are Bangs vaccinated.

Health Certificates: Will be furnished anywhere in the U.S.A.

Liabilities: All people who attend the sale do so at their own risk and the owner and sale management assume no liability, legal or otherwise, for any accidents which may occur.

Contracts: The above terms and guarantees shall constitute a contract between the buyer and seller of each animal sold.

Default: In the event the Buyer defaults on payment, the Buyer shall be responsible for all costs, including attorney's costs, incurred by Sale Management or Seller in connection with collecting, or attempting to collect, payment due.

Delivery: Free delivery on bulls immediately following the sale to central sale barn locations in North Dakota and adjacent states. Beyond that, delivery at cost only. Forster will help arrange for shared trailer loads to central locations and prorate the loads at cost. We try to arrange deliveries to accommodate as many buyers as possible, but it is impossible to schedule perfectly. Please try to understand. Forster normally will deliver most cattle.

HOW DOES DVAUCTION, ONLINE AUCTION WORK?

This means that bidders will be able to preview the lots online with complete information, including Pedigree, EPDs, and video, for several days prior to the sale. During that time, bidders can leave a maximum bid, which the system will represent confidentially up to that amount. Bidders can also bid incrementally, as the bid advances prior to the close.

**All lots for this event will close at the same time. If a bid is placed within 5 minutes of the closing time, closing times for that event will be extended 5 minutes for all lots after that bid. This continues until no bids are placed for 5 minutes.*

For general questions to set up account please contact DVAuctions office at: 402-316-5460 or support@dvauction.com

**HIGH SPEED INTERNET ACCESS REQUIRED

REASONS TO BUY FROM ONLINE AUCTION

- 1 Shop at YOUR Convenience**
- 2 NO Pressure** – View bulls, go home, and decide what to bid on
- 3 View Bulls at Forster Ranch** on YOUR time from February 13-18, 2024
- 4 Easy Access** to Forster Ranch
- 5 Weather is LESS Concerning** – 6 days to view bulls & bid
- 6 Watch & Bid Online for FREE** on www.dvauction.com

WATCH AND BID ONLINE FOR FREE!

Online Registration required at www.dvauction.com PRIOR to sale

DVAuction
Broadcasting Real-Time Auctions

Visit WWW.DVAUCTION.COM
for online bidding, catalog, and video of the bulls.



Watch & bid online for FREE at



DVAuction

Broadcasting Real-Time Auctions

Bid from home with DV Auction's "real-time" internet bidding service!

Buying online is as easy as 1, 2, 3...

1. Create an account at www.dvauction.com under the "register" tab and watch our online bidding tutorial
2. Apply for bidding approval by clicking on the "details" tab at least 24 hours prior to the auction-a DV representative will notify you once you have been approved
3. Tune in for the sale and make you purchases!

After the sale, contact the sale manager or owner to arrange transportation and payment. **High speed internet** is required for successful bidding-be sure to check the lag-time monitor in the top left corner to ensure real-time broadcasts.

Proxy Bidding-if you can't make time to watch the sale, register a proxy bid and let our system represent your bid while you're away. Look for the "proxy bid" tab on the auction listing, and fill in your maximum bids. We'll handle the rest!

Having troubles? Call Tami at (308) 870-3661 or email tami@dvauction.com
Our full-time support team can also always be reached at (402) 474-5557.

DVAuction
Broadcasting Real-Time Auctions

Full Service Livestock Marketing

Internet Auction Broadcast & Bidding - Video - Photography - Banner Ads

The Stock Exchange - Ring Service - Onsite Viewing Service

1 FORSTER RECON 3051

D.O.B. 5/2/2023 REG# 4839600 TATTOO 3051 / FRR 100% AR A

S A V RESOURCE 1441		Data	Ratio
FORSTER RESOURCE D094		C. Ease	Star *
FORSTER COPPER LASS 9082		Act. BW	88 109
FORSTER RESOURCE G079	FORSTER LEGEND 8213	Adj. WW	690 111
FORSTER CALANDRA Z086	FORSTER CALANDRA 9135	Adj. YW	114
	ADG		120
	SC		39
FORSTER JESSIE G012	5L BLOCKADE 2218-30B	Ultrasound	
	FORSTER PANSY Z011	%IMF	111
	RED XO CROWFOOT SHINE 2435Z	REA	122
	FORSTER JESSIE C019	FAT	104
	FORSTER JESSIE A080		

HB	GM	CED	BW	WW	YW	MILK	ME	HPG	CEM	STAY	MARB	REA	FAT	
EPD	52	49	14	-1.1	77	127	23	14	11	6	17	0.26	0.57	0.02
Top%	51	57	37	64	13	10	74	94	60	69	18	87	2	58

He is a wide, long, level topped bull with depth of body, rib, & flank. He has real good capacity, is thick made, and free moving with a square hip. He has good feet too! Tremendous performance #'s on this stud & carcass. Dam, Forster Jessie G012, on 4 calves Avg BW-99, WW-110, YW-111. For 7 generations back on the dam side all are very good producing cows.



3 FORSTER JET 3230

D.O.B. 5/23/2023 REG# 4839964 TATTOO 3230 / FRR 100% AR A

SANDERSON EPIC JOURNEY		Data	Ratio
CBR EPIC 4144-6215		C. Ease	Star *
CBR MISS MONNIE 8340-4144		Act. BW	92 112
SODAK EPIC F747	SODAK OSCAR T322/W558	Adj. WW	707 114
SODAK PRINCESS Z087	SODAK PRINCESS X035	Adj. YW	121
	ADG		133
	SC		40
FORSTER COPPERQUEEN F201	CBR MOONSHINE 26-48	Ultrasound	
	FORSTER BELA B173	%IMF	108
	CBR MOONSHINE 26-48	REA	100
	FORSTER COPPERQUEEN D151	FAT	125
	FORSTER COPPERQUEEN B072		

HB	GM	CED	BW	WW	YW	MILK	ME	HPG	CEM	STAY	MARB	REA	FAT	
EPD	69	53	10	2.2	75	128	29	14	15	6	18	0.26	0.25	0.01
Top%	19	45	87	98	16	10	23	94	9	74	10	87	30	39

A wide, long topped bull with depth of body, rib, & flank. He has excellent capacity and is thick made. He has a tremendous WW & kept on gaining. He is one of the top ADG on test, and still scanned positive for IMF. He is really tame! Dam on 5 calves Avg. WW-111, YW-115; she cranks them out. Keep the daughters!

4 FORSTER JET 3011

D.O.B. 4/26/2023 REG# 4839520 TATTOO 3011 / FRR 100% AR A

SANDERSON EPIC JOURNEY		Data	Ratio
CBR EPIC 4144-6215		C. Ease	Star *
CBR MISS MONNIE 8340-4144		Act. BW	77 94
SODAK EPIC F747	SODAK OSCAR T322/W558	Adj. WW	657 106
SODAK PRINCESS Z087	SODAK PRINCESS X035	Adj. YW	112
	ADG		121
	SC		38.5
FORSTER TIDY BEE E117	BECKTON EPIC X796 J5	Ultrasound	
	FORSTER PAT 6140	%IMF	122
	FORSTER TIDY BEE B135	REA	108
	FORSTER TIDY BEE 5054	FAT	102

HB	GM	CED	BW	WW	YW	MILK	ME	HPG	CEM	STAY	MARB	REA	FAT	
EPD	78	50	13	-0.4	73	117	28	6	14	7	18	0.33	0.3	0.01
Top%	9	53	43	77	23	23	26	64	16	48	10	75	23	42

He is a wide, long, level topped bull. He is thick made and has a set of #'s! Low BW on one of the top performing bulls on test & ranking in the top for carcass. Dam Forster Tidy Bee lineage goes back many generations for producing some of the good ones. Keep the daughters!



2 FORSTER JET 3150

D.O.B. 5/11/2023 REG# 4839800 TATTOO 3150 / FRR 100% AR A

SANDERSON EPIC JOURNEY		Data	Ratio
CBR EPIC 4144-6215		C. Ease	Star *
CBR MISS MONNIE 8340-4144		Act. BW	86 105
SODAK EPIC F747	SODAK OSCAR T322/W558	Adj. WW	813 131
SODAK PRINCESS Z087	SODAK PRINCESS X035	Adj. YW	126
	ADG		117
	SC		38
FORSTER EMERALD F031	CBR MOONSHINE 26-48	Ultrasound	
	FORSTER COPPERQUEEN B113	%IMF	78
	FORSTER WIDESCREEN Z077	REA	108
	FORSTER EMERALD D029	FAT	75
	LEAF EMERALD 0628		

HB	GM	CED	BW	WW	YW	MILK	ME	HPG	CEM	STAY	MARB	REA	FAT	
EPD	70	32	12	0.5	78	124	33	10	14	6	18	0.17	0.3	0
Top%	18	87	63	88	10	13	4	84	15	74	12	96	23	23

Wide, long topped bull with depth of body, rib, & flank. He has real good capacity. Heaviest WW bull & kept on going. Performance bull with some bone. Keep the daughters. Dam on 5 calves Avg. BW-97, WW-113, YW-109. She cranks out the power!

5 FORSTER HISTORY 3189

D.O.B. 5/15/2023 REG# 4839880 TATTOO 3189 / FRR 100% AR A

		Data	Ratio
5L BLOCKADE 2218-30B		C. Ease	Star *
FORSTER BLOCKADE D057		Act. BW	80 97
FORSTER CAMILLA Z045		Adj. WW	694 112
FORSTER HISTORY G025		Adj. YW	114
BECKTON CODY U659 K1		ADG	117
FORSTER COPPERQUEEN C123		SC	43
FORSTER COPPERQUEEN 9055		Ultrasound	
DEKAP RED DALLES 345		%IMF	116
RED BBCC PRESIDIO 5Z		REA	104
FORSTER BLUE C067		FAT	185
RED KBJ LASSIE 133X			
RED PAT 4475			
FORSTER BLUE 6185			
FORSTER BLUE 3087			
MPPA 108	DAM AGE 8		

HB	GM	CED	BW	WW	YW	MILK	ME	HPG	CEM	STAY	MARB	REA	FAT	
EPD	73	59	12	-1.7	78	120	24	6	10	6	19	0.48	0.37	0.02
Top%	14	33	58	52	11	19	73	63	75	74	5	37	16	56

He is a wide, long, level topped bull and is long bodied. He has a real good WW, YW, & ADG. Scanned good on carcass. He will catch your eye. Dam, Forster Blue C067, Avg. progeny on 9 calves WW-109, YW-107, IMF-115, REA-105. Granddam on 9 calves MPPA-102.



7 FORSTER WIDESCREEN 3128

D.O.B. 5/9/2023 REG# 4839758 TATTOO 3128 / FRR 100% AR A

		Data	Ratio
FORSTER WIDESCREEN Z077		C. Ease	Star *
FORSTER WIDESCREEN C193		Act. BW	82 100
FORSTER DIXIE 6058		Adj. WW	634 102
FORSTER WIDESCREEN G292		Adj. YW	109
BECKTON CODY U659 K1		ADG	120
FORSTER ALINA B032		SC	41.5
FORSTER ALINA 4020		Ultrasound	
FORSTER MOON D091		%IMF	106
FORSTER LORI F158		REA	103
FORSTER LORI D158		FAT	107
FORSTER LORI B052			
MPPA 91	DAM AGE 5		

HB	GM	CED	BW	WW	YW	MILK	ME	HPG	CEM	STAY	MARB	REA	FAT	
EPD	79	45	12	-1.6	68	114	22	7	12	6	20	0.32	0.16	0.01
Top%	8	64	63	54	38	29	81	69	38	69	3	77	46	29

Wide, long, level topped bull with depth of body. He is long bodied and will catch your eye. Nice #'s across the board. One of the high gaining bulls.



6 FORSTER BEACON 3071

D.O.B. 5/5/2023 REG# 4839640 TATTOO 3071 / FRR 100% AR A

		Data	Ratio
FORSTER HEATER Y153		C. Ease	Star *
FORSTER HEATER 517		Act. BW	82 102
FORSTER BEACON F056		Adj. WW	691 111
RED SSS ENDORSE 639X		Adj. YW	114
FORSTER TIDY BEE Z075		ADG	119
FORSTER TIDY BEE 5054		SC	40
BECKTON CODY U659 K1		Ultrasound	
FORSTER FINN C221		%IMF	98
FORSTER BEACON G011		REA	105
FORSTER COPPERQUEEN G011		FAT	131
FORSTER COPPERQUEEN D078			
FORSTER COPPERQUEEN B084			
MPPA 107	DAM AGE 4		

HB	GM	CED	BW	WW	YW	MILK	ME	HPG	CEM	STAY	MARB	REA	FAT	
EPD	41	60	11	0.4	79	134	24	18	10	5	17	0.32	0.35	0.01
Top%	72	31	73	87	8	5	67	98	79	82	23	77	17	33

Depth of body, rib, & flank with a wide, long, level top. He is long bodied. He has tremendous WW, YW, & ADG on this performance bull. Dark red. Dam on 4 calves Avg. WW-110, YW-109.



8 FORSTER BEACON 3052

D.O.B. 5/3/2023 REG# 4839602 TATTOO 3052 / FRR 100% AR A

FORSTER HEATER 517	FORSTER HEATER Y153	Data	Ratio
FORSTER BEACON F056	FORSTER JOAN X007	C. Ease	Star *
FORSTER TIDY BEE Z075	RED SSS ENDORSE 639X	Act. BW	87 108
FORSTER FINN C221	FORSTER TIDY BEE 5054	Adj. WW	726 117
FORSTER EMERALD G283	BECKTON CODY U659 K1	Adj. YW	112
FORSTER EMERALD D029	FORSTER CASSIDY 6055	ADG	105
LEAF EMERALD 0628	FORSTER WIDESCREEN Z077	SC	40
		Ultrasound	
		%IMF	116
		REA	114
		FAT	117

HB	GM	CED	BW	WW	YW	MILK	ME	HPG	CEM	STAY	MARB	REA	FAT	
EPD	39	53	11	0.7	81	130	24	15	9	5	16	0.36	0.36	0.01
Top%	76	46	76	90	6	8	69	96	92	88	28	70	17	32

He has a thick butt, and depth of body & rib. He has a wide, long, level top. He is one of the top WW in the sale and scanned very good for marbling & rib. Dam on 4 calves Avg. BW-101, WW-106, YW-103, IMF-116, REA-114. Granddam progeny Avg. on 6 calves BW-96, WW-109, YW-105, MPPA-108.

9 FORSTER PRODUCT 3021

D.O.B. 4/28/2023 REG# 4839540 TATTOO 3021 / FRR 100% AR A

COLLIER FINISHED PRODUCT	COLLIER FINAL PRODUCT B389	Data	Ratio
KUHNS FINISHED PRODUCT H032	COLLIER AMY B385	C. Ease	Star ***
KUHNS BAILEY BOND Y112	8001 KUHN'S CHEY BOND	Act. BW	74 91
KUHNS BAILEY LOGAN 7032	FORSTER BLOCKADE D051	Adj. WW	652 105
FORSTER BLOCKADE D051	FORSTER PANSY Z011	Adj. YW	106
FORSTER COPPERQUEEN F113	5L BLOCKADE 2218-30B	ADG	106
FORSTER COPPERQUEEN C041	FORSTER WIDESCREEN Z077	SC	37.5
FORSTER COPPER QUEEN 8144		Ultrasound	
		%IMF	153
		REA	93
		FAT	141

HB	GM	CED	BW	WW	YW	MILK	ME	HPG	CEM	STAY	MARB	REA	FAT	
EPD	75	66	14	-4.2	65	106	22	9	12	7	20	0.5	0.23	0.03
Top%	11	21	28	12	51	45	85	78	36	50	4	33	32	79

He is a calving ease deluxe bull with a long, level top. He has good performance #'s. Top of the breed for HB, GM, BW, Stay. Highest Marbling scan in the sale. Keep the daughters!



9

10 FORSTER HIGHLIGHT 3126

D.O.B. 5/9/2023 REG# 4839754 TATTOO 3126 / FRR 100% AR A

FORSTER HEATER 517	FORSTER HEATER Y153	Data	Ratio
FORSTER BEACON F056	FORSTER JOAN X007	C. Ease	Star ***
FORSTER HIGHLIGHT 1093	FORSTER TIDY BEE Z075	Act. BW	74 95
FORSTER NORTH 9017	RED SSS ENDORSE 639X	Adj. WW	615 99
FORSTER CAMILLA Z045	FORSTER TIDY BEE 5054	Adj. YW	101
FORSTER CAMILLA 8042	BECKTON CODY U659 K1	ADG	103
JEFFRIES DEPTH CHARGE 556B	FORSTER CASSIDY 6055	SC	39
RED ARO 8113F	FORSTER WIDESCREEN Z077	Ultrasound	
RED ARO QUEEN 105	FORSTER EMERALD D029	%IMF	106
FORSTER LORI H024	LEAF EMERALD 0628	REA	102
FORSTER MOON D091		FAT	120
FORSTER LORI F158			
FORSTER LORI D158			

HB	GM	CED	BW	WW	YW	MILK	ME	HPG	CEM	STAY	MARB	REA	FAT	
EPD	50	56	13	-2.7	64	107	22	15	12	8	16	0.44	0.2	0.01
Top%	55	39	54	33	57	43	84	96	42	40	27	45	38	42

Calving ease deluxe bull that is long bodied and dark red.

11 FORSTER DOMAIN 3179

D.O.B. 5/15/2023 REG# 4839858 TATTOO 3179 / FRR 100% AR A

BECKTON DOMINOR T122 Z1	COLLIER FINAL PRODUCT B389	Data	Ratio
3SCC DOMAIN A163	COLLIER AMY B385	C. Ease	Star *
OKCC RED DOMAIN 108J	8001 KUHN'S CHEY BOND	Act. BW	78 99
3SCC EUCLA X723	FORSTER BLOCKADE D051	Adj. WW	754 121
RED HILL B571 JULIAN 84S	FORSTER PANSY Z011	Adj. YW	116
OKCC MISS PRIDE D157	5L BLOCKADE 2218-30B	ADG	106
OKCC MISS Z124	FORSTER WIDESCREEN Z077	SC	41
FORSTER BLOCKADE D051		Ultrasound	
FORSTER CAMILLA Z045		%IMF	111
FORSTER LORI H003		REA	117
FORSTER WIDESCREEN Z077		FAT	101
FORSTER LORI C139			
FORSTER LORI 6107			

HB	GM	CED	BW	WW	YW	MILK	ME	HPG	CEM	STAY	MARB	REA	FAT	
EPD	66	53	14	-1	80	129	29	7	11	6	18	0.41	0.49	0.03
Top%	23	45	31	66	8	8	22	67	59	69	12	51	4	69

Wide, long, level topped bull with depth of body, rib, & flank. He has good capacity. He is thick made and one of the heaviest WW in the sale. He will catch your eye. Scanned very good for marbling 7 ribeye. Dam cranks out some good ones. Granddam & Great Granddam were very good producing cows.



11

12 FORSTER DOMAIN 3035

D.O.B. 4/30/2023 REG# 4839568 TATTOO 3035 / FRR 100% AR A

		Data	Ratio
3SCC DOMAIN A163	BECKTON DOMINOR T122 Z1	C. Ease Star	*
3SCC EUCLA X723		Act. BW	78 100
OKCC RED DOMAIN 108J	RED HILL B571 JULIAN 84S	Adj. WW	756 122
OKCC MISS PRIDE D157	OKCC MISS Z124	Adj. YW	123
		ADG	124
FORSTER SEEKER F156	FORSTER HEATER 517	SC	39
3SCC VERNA Z53		Ultrasound	
FORSTER TIDY BEE H036	FORSTER EPIC B020	%IMF	85
FORSTER TIDY BEE E117	FORSTER TIDY BEE B135	REA	108
		FAT	104

HB	GM	CED	BW	WW	YW	MILK	ME	HPG	CEM	STAY	MARB	REA	FAT	
EPD	60	67	14	-0.5	85	144	32	12	13	7	16	0.39	0.43	0.03
Top%	35	20	31	75	3	2	7	89	27	53	28	59	7	66

He has depth of body, rib, and flank with a wide top line. He is thick made, and is one of the top WW, YW, & gaining bulls in the sale. Dam progeny on 3, WW-113, YW-116.

15 FORSTER HISTORY 3029

D.O.B. 4/29/2023 REG# 4839556 TATTOO 3029 / FRR 100% AR A

		Data	Ratio
5L BLOCKADE 2218-30B	FORSTER BLOCKADE D057	C. Ease Star	*
FORSTER CAMILLA Z045		Act. BW	80 97
FORSTER HISTORY G025	BECKTON CODY U659 K1	Adj. WW	661 106
FORSTER COPPERQUEEN C123	FORSTER COPPERQUEEN 9055	Adj. YW	107
		ADG	108
FORSTER WIDESCREEN Z077	RED SSS ENDORSE 639X	SC	38
FORSTER PANSY 8076		Ultrasound	
FORSTER COPPERQUEEN E063	RHRA GOLD RUSH 402 17T	%IMF	109
FORSTER COPPERQUEEN 9028	FORSTER COPPERQUEEN 5100	REA	111
		FAT	103

HB	GM	CED	BW	WW	YW	MILK	ME	HPG	CEM	STAY	MARB	REA	FAT	
EPD	70	45	15	-2.4	80	124	29	10	11	8	18	0.36	0.5	0
Top%	18	64	22	39	8	14	21	84	68	38	8	70	4	25

He is thick made, and has real good performance #'s from beginning to end. Dam, Forster Copperqueen E063, is one of the first cows to calve every year.

13 FORSTER DOMAIN 3151

D.O.B. 5/11/2023 REG# 4839802 TATTOO 3151 / FRR 100% AR A

		Data	Ratio
3SCC DOMAIN A163	BECKTON DOMINOR T122 Z1	C. Ease Star	**
3SCC EUCLA X723		Act. BW	77 99
OKCC RED DOMAIN 108J	RED HILL B571 JULIAN 84S	Adj. WW	644 104
OKCC MISS PRIDE D157	OKCC MISS Z124	Adj. YW	110
		ADG	120
FORSTER FINN C221	BECKTON CODY U659 K1	SC	40
FORSTER LAKETTE H270	FORSTER CASSIDY 6055	Ultrasound	
	FORSTER PAT 6140	%IMF	116
FORSTER LAKETTE A417	FORSTER LAKETTE X172	REA	114
		FAT	101

HB	GM	CED	BW	WW	YW	MILK	ME	HPG	CEM	STAY	MARB	REA	FAT	
EPD	72	53	16	-1	72	119	28	1	13	7	17	0.42	0.35	0.03
Top%	15	46	16	66	26	21	32	35	28	50	18	49	17	70

Wide, long, level topped bull with depth of body, rib, & flank. You can use him on large heifers or cows. He has a great set of performance #'s and he kept on gaining. He scanned real good for IMF & REA. Hard to get! Dam on 3 calves Avg. WW-107, YW-107, IMF-116, REA-114.

16 FORSTER BEACON 3085

D.O.B. 5/5/2023 REG# 4839672 TATTOO 3085 / FRR 100% AR A

		Data	Ratio
FORSTER HEATER Y153	FORSTER HEATER 517	C. Ease Star	*
FORSTER BEACON F056	FORSTER JOAN X007	Act. BW	90 112
FORSTER TIDY BEE Z075	RED SSS ENDORSE 639X	Adj. WW	706 113
FORSTER TIDY BEE 5054		Adj. YW	123
		ADG	139
FORSTER MOON D156	CBR MOONSHINE 26-48	SC	42
FORSTER SAGE G130	FORSTER COPPERQUEEN B113	Ultrasound	
	FORSTER WIDESCREEN Z077	%IMF	131
FORSTER SAGE E040	FORSTER SAGE A006	REA	101
		FAT	143

HB	GM	CED	BW	WW	YW	MILK	ME	HPG	CEM	STAY	MARB	REA	FAT	
EPD	36	68	10	2.1	88	147	24	19	10	4	16	0.35	0.38	0.01
Top%	80	19	86	97	2	1	67	99	73	92	32	71	15	33

Long bodied bull with a wide, long, level top. He has depth of body, rib, & flank. He has big nuts and is dark red. Big WW, YW, & the top gaining bull in the offering. He also scanned at the top for marbling. Dam, Forster Sage G130, on 4 calves Avg. WW-105, YW-110, IMF-118, REA-108. She can crank them out. Granddam on 6 calves WW-111, YW-110, MPPA-109.

14 FORSTER DOMAIN 3041

D.O.B. 5/1/2023 REG# 4839582 TATTOO 3041 / FRR 100% AR A

		Data	Ratio
3SCC DOMAIN A163	BECKTON DOMINOR T122 Z1	C. Ease Star	**
3SCC EUCLA X723		Act. BW	75 96
OKCC RED DOMAIN 108J	RED HILL B571 JULIAN 84S	Adj. WW	633 102
OKCC MISS PRIDE D157	OKCC MISS Z124	Adj. YW	105
		ADG	110
FORSTER BEACON F056	FORSTER HEATER 517	SC	41
FORSTER COPPERLASS H018	FORSTER TIDY BEE Z075	Ultrasound	
	RED BLAZE V415	%IMF	97
FORSTER COPPERLASS E089	FORSTER COPPER LASS Y002	REA	103
		FAT	180

HB	GM	CED	BW	WW	YW	MILK	ME	HPG	CEM	STAY	MARB	REA	FAT	
EPD	45	67	15	-1.1	77	129	25	13	12	6	16	0.42	0.35	0.03
Top%	65	20	21	64	12	9	59	92	39	71	37	49	17	75

He is a deep bodied bull with a wide, level top. He could be used on large heifers or cows. Solid performance #'s.



16

17 FORSTER BEACON 3137

D.O.B. 5/10/2023 REG# 4839774 TATTOO 3137 / FRR 100% AR A

FORSTER HEATER Y153		Data	Ratio
FORSTER HEATER 517			
FORSTER JOAN X007		C. Ease	Star *
FORSTER BEACON F056	RED SSS ENDORSE 639X	Act. BW	89 109
	FORSTER TIDY BEE Z075	Adj. WW	680 109
	FORSTER TIDY BEE 5054	Adj. YW	113
BECKTON CODY U659 K1		ADG	119
FORSTER JAKK C110		SC	40.5
FORSTER JESSIE 8184		Ultrasound	
FORSTER DREAM BEE G056	FORSTER GOLD 9059	%IMF	77
	FORSTER DREAM BEE A094	REA	103
	FORSTER DREAM BEE X042	FAT	101
MPPA 102	DAM AGE 4		

HB	GM	CED	BW	WW	YW	MILK	ME	HPG	CEM	STAY	MARB	REA	FAT	
EPD	32	50	10	1.3	81	132	22	17	10	4	15	0.29	0.23	0.01
Top%	86	53	86	94	7	7	82	98	78	93	38	82	32	35

Wide, long, level topped bull with depth of body, rib, & flank. He has good capacity. Real good performance #'s across the board and ranks at the top. Dam weaned another big calf this year. Granddam has MPPA-105.



19 FORSTER JET 3022

D.O.B. 4/29/2023 REG# 4839542 TATTOO 3022 / FRR 100% AR A

SANDERSON EPIC JOURNEY		Data	Ratio
CBR EPIC 4144-6215			
CBR MISS MONNIE 8340-4144		C. Ease	Star *
SODAK EPIC F747	SODAK OSCAR T322/W558	Act. BW	82 101
	SODAK PRINCESS Z087	Adj. WW	594 95
	SODAK PRINCESS X035	Adj. YW	104
5L BLOCKADE 2218-30B		ADG	116
FORSTER BLOCKADE D057		SC	39
FORSTER CAMILLA Z045		Ultrasound	
FORSTER VERNA F132	8001 KUHN'S CHEY BOND	%IMF	126
	FORSTER VERNA C203	REA	114
	3SCC VERNA Z30	FAT	88
MPPA 95	DAM AGE 5		

HB	GM	CED	BW	WW	YW	MILK	ME	HPG	CEM	STAY	MARB	REA	FAT	
EPD	75	40	13	-0.9	64	105	23	5	13	7	18	0.3	0.32	0.01
Top%	12	73	54	66	57	49	78	56	23	58	9	82	20	45

Wide, long topped bull with depth of body and rib. He is thick made, and will catch your eye! One of the top gaining & marbling bulls.

20 FORSTER JET 3109

D.O.B. 5/7/2023 REG# 4839720 TATTOO 3109 / FRR 100% AR A

SANDERSON EPIC JOURNEY		Data	Ratio
CBR EPIC 4144-6215			
CBR MISS MONNIE 8340-4144		C. Ease	Star *
SODAK EPIC F747	SODAK OSCAR T322/W558	Act. BW	86 106
	SODAK PRINCESS Z087	Adj. WW	675 108
	SODAK PRINCESS X035	Adj. YW	103
VGW NAVIGATOR 010		ADG	94
FORSTER NAV B002		SC	40.5
PFFR MS NANCY 8007		Ultrasound	
FORSTER COPPERQUEEN F192	BECKTON CODY U659 K1	%IMF	99
	FORSTER COPPER QUEEN C147	REA	92
	FORSTER COPPERQUEEN 5081	FAT	101
MPPA 104	DAM AGE 5		

HB	GM	CED	BW	WW	YW	MILK	ME	HPG	CEM	STAY	MARB	REA	FAT	
EPD	77	37	11	0.5	66	105	29	8	15	5	19	0.23	0.01	0.02
Top%	10	80	78	88	50	47	22	77	9	82	5	91	77	58

Depth of body, wide, long topped bull. He has good capacity and big WW. Dam on 5 calves Avg WW-105.

18 FORSTER JET 3053

D.O.B. 5/3/2023 REG# 4839604 TATTOO 3053 / FRR 100% AR A

SANDERSON EPIC JOURNEY		Data	Ratio
CBR EPIC 4144-6215			
CBR MISS MONNIE 8340-4144		C. Ease	Star *
SODAK EPIC F747	SODAK OSCAR T322/W558	Act. BW	78 95
	SODAK PRINCESS Z087	Adj. WW	641 103
	SODAK PRINCESS X035	Adj. YW	104
HXC CONQUEST 4405P		ADG	104
FORSTER CONQ B006		SC	43
3SCC MARIE Z306		Ultrasound	
FORSTER DREAM BEE D178	FORSTER GOLD 9059	%IMF	135
	FORSTER DREAM BEE A094	REA	101
	FORSTER DREAM BEE X042	FAT	130
MPPA 102	DAM AGE 7		

HB	GM	CED	BW	WW	YW	MILK	ME	HPG	CEM	STAY	MARB	REA	FAT	
EPD	74	39	13	-1.2	60	95	31	7	12	8	19	0.28	0.12	0.02
Top%	13	77	50	62	73	71	10	70	37	40	7	84	54	49

He has a wide, long, level top with depth of body, rib, & flank. He has good capacity and is thick made. Dam is a solid producer on 7 calves. Granddam had a MPPA-105.



21 FORSTER JET 3020

D.O.B. 4/28/2023 REG# 4839538 TATTOO 3020 / FRR 100% AR A

		Data	Ratio
SANDERSON EPIC JOURNEY		C. Ease	Star **
CBR EPIC 4144-6215		Act. BW	81 99
SODAK EPIC F747		Adj. WW	739 119
CBR MISS MONNIE 8340-4144		Adj. YW	111
SODAK OSCAR T322/W558		ADG	98
SODAK PRINCESS SS 2087		SC	40
SODAK PRINCESS X035		Ultrasound	
BECKTON CODY U659 K1			
FORSTER CODY A412		%IMF	106
FORSTER BELA F014		REA	113
FORSTER FLO JO Y073		FAT	75
FORSTER LEGEND 8213			
FORSTER BELA Y057			
FORSTER BELA 1019			
MPPA 104	DAM AGE 5		

HB	GM	CED	BW	WW	YW	MILK	ME	HPG	CEM	STAY	MARB	REA	FAT	
EPD	80	35	14	-0.9	64	102	30	6	14	7	19	0.23	0.29	0.01
Top%	7	83	31	66	55	57	15	65	19	46	5	91	24	33

Wide, long topped bull with depth of body, rib, and flank. He is a free moving bull with a nice front end. You can use him on large heifers or cows. One of the heaviest WW. Dam, Forster Bela F014, Avg Progeny BW-99, WW-105, YW-105, REA-114. Granddam Y057 on 10 calves Avg. BW-98, WW-109, YW-105, MPPA-108. Keep the daughters!



23 FORSTER RECON 3009

D.O.B. 4/26/2023 REG# 4839516 TATTOO 3009 / FRR 100% AR A

		Data	Ratio
S A V RESOURCE 1441		C. Ease	Star **
FORSTER RESOURCE D094		Act. BW	80 99
FORSTER RESOURCE G079		Adj. WW	583 94
FORSTER COPPER LASS 9082		Adj. YW	103
FORSTER LEGEND 8213		ADG	117
FORSTER CALANDRA Z086		SC	39.5
FORSTER CALANDRA 9135		Ultrasound	
BECKTON CODY K1 P014			
FORSTER BELA A410		%IMF	64
BECKTON CODY U659 K1		REA	92
BKT PINE MARIE P351 EP		FAT	101
FORSTER LEGEND 8213			
FORSTER BELA Y057			
FORSTER BELA 1019			
MPPA 101	DAM AGE 10		

HB	GM	CED	BW	WW	YW	MILK	ME	HPG	CEM	STAY	MARB	REA	FAT	
EPD	64	46	16	-2.1	60	104	26	12	12	8	18	0.18	0.19	0.01
Top%	27	64	12	43	71	50	51	89	43	30	9	95	40	42

He is a wide, long, level topped bull with depth of body. He is a dark red 2-star bull. One of the top gaining bulls. Dam is going on 12 years old. Keep the daughters! His granddam produced until she was 12 years old as well.

24 FORSTER RECON 3079

D.O.B. 5/5/2023 REG# 4839660 TATTOO 3079 / FRR 100% AR A

		Data	Ratio
S A V RESOURCE 1441		C. Ease	Star **
FORSTER RESOURCE D094		Act. BW	78 97
FORSTER RESOURCE G079		Adj. WW	597 96
FORSTER COPPER LASS 9082		Adj. YW	97
FORSTER LEGEND 8213		ADG	99
FORSTER CALANDRA Z086		SC	38
FORSTER CALANDRA 9135		Ultrasound	
RED BLAZE V415			
FORSTER BLAZE E073		%IMF	134
FORSTER FLO JO G014		REA	94
RED BBCC PRESIDIO 5Z		FAT	131
FORSTER FLO JO D089			
FORSTER FLO JO Y196			
MPPA 99	DAM AGE 4		

HB	GM	CED	BW	WW	YW	MILK	ME	HPG	CEM	STAY	MARB	REA	FAT	
EPD	46	60	14	-1.1	60	99	19	9	11	7	16	0.36	0.21	0.02
Top%	64	30	37	64	70	64	97	77	51	63	37	70	36	49

Smooth made with depth of body & rib. Thick heifer bull. One of the top marbling bulls. Granddam, Forster Flojo D089, on 7 calves Avg. WW-105, YW-106, MPPA-104.

22 FORSTER RECON 3188

D.O.B. 5/15/2023 REG# 4839878 TATTOO 3188 / FRR 100% AR A

		Data	Ratio
S A V RESOURCE 1441		C. Ease	Star **
FORSTER RESOURCE D094		Act. BW	75 91
FORSTER RESOURCE G079		Adj. WW	603 97
FORSTER COPPER LASS 9082		Adj. YW	100
FORSTER LEGEND 8213		ADG	105
FORSTER CALANDRA Z086		SC	38.5
FORSTER CALANDRA 9135		Ultrasound	
5L DEFENDER 560-30Z			
5L BLOCKADE 2218-30B		%IMF	96
5L OPAL 656-2218		REA	94
FORSTER PANSY E055		FAT	134
CWK 6486 625R			
FORSTER PANSY 8152			
FORSTER PANSY 6035			
MPPA 96	DAM AGE 6		

HB	GM	CED	BW	WW	YW	MILK	ME	HPG	CEM	STAY	MARB	REA	FAT	
EPD	34	55	15	-2.2	68	116	18	14	10	7	15	0.28	0.46	0.01
Top%	83	40	21	42	39	25	98	95	79	61	43	84	6	39

Wide, long, level topped bull with depth of body, rib, & flank. He is a 2-star bull with good gains. His Granddam had 10 calves Avg. BW-99, WW-113, YW-110, IMF-108, REA-109, MPPA-111.



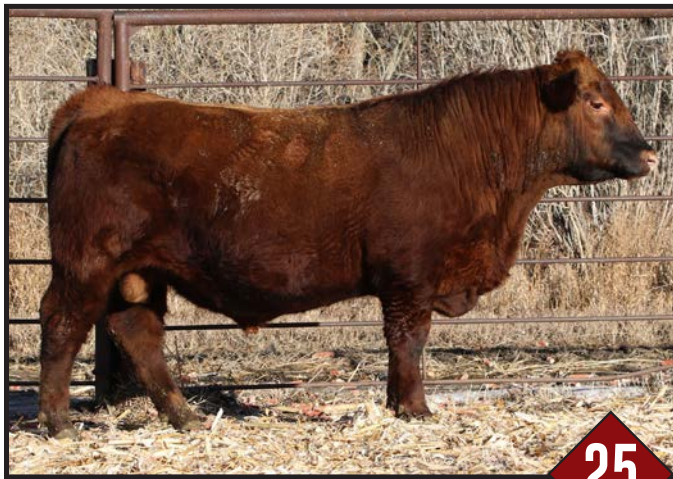
25 FORSTER B-RAD 3125

D.O.B. 5/9/2023 REG# 4839752 TATTOO 3125 / FRR 100% AR A

FORSTER B-RAD 1025	RED ARO 8113F	JEFFRIES DEPTH CHARGE 556B	Data	Ratio
	RED ARO QUEEN 105		C. Ease	Star **
	FORSTER MOON D156		Act. BW	66 85
	FORSTER CAMILLA G206		Adj. WW	632 102
FORSTER EMERALD H033	FORSTER CAMILLA E052		Adj. YW	110
	BECKTON CODY U659 K1		ADG	123
	FORSTER FINN C221	FORSTER CASSIDY 6055	SC	39.5
	FORSTER WIDESCREEN Z077		Ultrasound	
MPPA 103 DAM AGE 3	FORSTER EMERALD D029	LEAF EMERALD 0628	%IMF	86
			REA	113
			FAT	107

EPD	HB	GM	CED	BW	WW	YW	MILK	ME	HPG	CEM	STAY	MARB	REA	FAT
51	44	16	-3.7	64	109	28	10	11	9	15	15	0.25	0.35	0.02
Top%	52	67	12	18	57	40	32	84	56	15	40	88	17	49

Heifer bull with good #'s. one of the high gaining bulls with a big ribeye. He is thick made and easy on the eyes. Dam is a good producer. Granddam progeny on 6 calves Avg. BW-96, WW-109, YW-105, MPPA-108.



27 FORSTER HIGHLIGHT 3059

D.O.B. 5/3/2023 REG# 4839616 TATTOO 3059 / FRR 100% AR A

FORSTER HIGHLIGHT 1093	FORSTER HEATER 517		Data	Ratio
	FORSTER BEACON F056		C. Ease	Star **
	FORSTER TIDY BEE Z075		Act. BW	77 99
	FORSTER NORTH 9017		Adj. WW	544 87
FORSTER EMERALD H054	FORSTER CAMILLA Z045		Adj. YW	98
	FORSTER CAMILLA 8042		ADG	114
	FORSTER HEATER 517		SC	36.5
	FORSTER RILEY E123	FORSTER COPPER QUEEN C104		Ultrasound
MPPA 102 DAM AGE 3	FORSTER MOON D156		%IMF	136
	FORSTER EMERALD F031		REA	101
	FORSTER EMERALD D029		FAT	105

EPD	HB	GM	CED	BW	WW	YW	MILK	ME	HPG	CEM	STAY	MARB	REA	FAT
27	54	13	-2.3	64	105	28	16	11	6	14	14	0.45	0.19	0
Top%	91	43	47	41	56	47	32	97	59	72	61	43	40	23

Wide, long top and long bodied bull. He is a 2-star heifer bull with eye appeal. One of the top gaining bulls on test & one of top scans for marbling. Dam was injured the summer she raised this bull. We kept a son out of her the first year for our own use.

28 FORSTER HIGHLIGHT 3184

D.O.B. 5/15/2023 REG# 4839868 TATTOO 3184 / FRR 100% AR A

FORSTER HIGHLIGHT 1093	FORSTER HEATER 517		Data	Ratio
	FORSTER BEACON F056		C. Ease	Star *
	FORSTER TIDY BEE Z075		Act. BW	77 97
	FORSTER NORTH 9017		Adj. WW	722 116
FORSTER BELINDA H202	FORSTER CAMILLA Z045		Adj. YW	107
	FORSTER CAMILLA 8042		ADG	93
	5L BLOCKADE 2218-30B		SC	37.5
	FORSTER BLOCKADE D057	FORSTER CAMILLA Z045		Ultrasound
MPPA 105 DAM AGE 3	BECKTON CODY U659 K1		%IMF	114
	FORSTER BELINDA B065		REA	108
	FORSTER BELINDA 5238		FAT	101

EPD	HB	GM	CED	BW	WW	YW	MILK	ME	HPG	CEM	STAY	MARB	REA	FAT
45	41	12	-1.6	74	114	26	13	10	6	16	16	0.43	0.28	0.01
Top%	65	72	63	54	20	28	51	93	85	74	25	47	25	37

He has a long, level, top and is long bodied. He has a big WW with real good carcass scans. Dam on 3 calves Avg. WW-107, YW-104, IMF-114, REA-108.



26 FORSTER BEACON 3073

D.O.B. 5/5/2023 REG# 4839644 TATTOO 3073 / FRR 100% AR A

FORSTER BEACON F056	FORSTER HEATER Y153		Data	Ratio
	FORSTER HEATER 517		C. Ease	Star *
	FORSTER JOAN X007		Act. BW	87 108
	RED SSS ENDORSE 639X		Adj. WW	595 96
FORSTER JESSIE G070	FORSTER TIDY BEE Z075		Adj. YW	104
	FORSTER TIDY BEE 5054		ADG	116
	BECKTON CODY U659 K1		SC	39
	FORSTER FINN C221	FORSTER CASSIDY 6055		Ultrasound
MPPA 96 DAM AGE 4	FORSTER MOONSHINE 26-48		%IMF	97
	FORSTER JESSIE D010		REA	113
	FORSTER JESSIE B111		FAT	131

EPD	HB	GM	CED	BW	WW	YW	MILK	ME	HPG	CEM	STAY	MARB	REA	FAT
36	56	11	0.8	73	125	18	15	10	5	16	16	0.32	0.41	0.01
Top%	81	37	81	91	22	13	98	95	78	87	36	77	8	35

He is a long-bodied bull with a square hip and is free moving. One of the top ADG bulls & REA.

29 FORSTER JET 3175

D.O.B. 5/15/2023 REG# 4839850 TATTOO 3175 / FRR 100% AR A

SANDERSON EPIC JOURNEY		Data	Ratio
CBR EPIC 4144-6215	C. Ease	Star	*
SODAK EPIC F747	Act. BW	84	102
SODAK PRINCESS 2087	Adj. WW	624	100
SODAK PRINCESS X035	Adj. YW		100
FORSTER MOON D091	ADG		100
FORSTER TIDY BEE F052	SC	39.5	
FORSTER TIDY BEE D118	Ultrasound		
FORSTER TIDY BEE A155	%IMF	60	
MPPA 97	REA	105	
DAM AGE 5	FAT	75	

HB	GM	CED	BW	WW	YW	MILK	ME	HPG	CEM	STAY	MARB	REA	FAT	
EPD	79	33	12	0.2	62	102	25	7	14	7	19	0.21	0.22	0.01
Top%	8	86	67	85	63	57	54	72	12	63	5	93	35	37

Long bodied bull that has a nice head and is dark red. He has balanced #'s across the board.

32 FORSTER PRODUCT 3152

D.O.B. 5/11/2023 REG# 4839804 TATTOO 3152 / FRR 100% AR A

COLLIER FINAL PRODUCT B389		Data	Ratio
COLLIER FINISHED PRODUCT	C. Ease	Star	**
COLLIER AMY B385	Act. BW	78	97
KUHNS FINISHED PRODUCT H032	Adj. WW	603	97
8001 KUHNS CHEY BOND	Adj. YW		104
KUHNS BAILEY BOND Y112	ADG		114
KUHNS BAILEY LOGAN 7032	SC	36.5	
FORSTER BLOCKADE D057	Ultrasound		
FORSTER LORI G277	%IMF	112	
FORSTER LORI 6107	REA	92	
FORSTER LORI 0112	FAT	75	
MPPA 105	DAM AGE 4		

HB	GM	CED	BW	WW	YW	MILK	ME	HPG	CEM	STAY	MARB	REA	FAT	
EPD	75	59	12	-2.5	60	101	26	11	13	6	20	0.44	0.18	0.03
Top%	12	33	61	37	72	58	46	89	32	67	2	45	43	66

Long, level topped bull. He is long bodied, smooth made, and had good gains on test. Dam on 4 calves Avg. WW-107, YW-112, IMF-122. Granddam was in our flush program.

30 FORSTER JET 3116

D.O.B. 5/8/2023 REG# 4839734 TATTOO 3116 / FRR 100% AR A

SANDERSON EPIC JOURNEY		Data	Ratio
CBR EPIC 4144-6215	C. Ease	Star	*
SODAK EPIC F747	Act. BW	89	109
SODAK PRINCESS 2087	Adj. WW	617	99
SODAK PRINCESS X035	Adj. YW		107
FORSTER BLOCKADE D057	ADG		119
FORSTER LEAH G024	SC	36.5	
FORSTER LEAH C188	Ultrasound		
FORSTER LEAH T46	%IMF	96	
MPPA 104	REA	107	
DAM AGE 4	FAT	107	

HB	GM	CED	BW	WW	YW	MILK	ME	HPG	CEM	STAY	MARB	REA	FAT	
EPD	70	34	12	-0.1	66	108	28	9	13	6	19	0.2	0.29	0.01
Top%	18	84	66	81	50	42	31	81	32	74	6	94	24	42

Long, level topped bull with depth of rib. He is long bodied. He is one of the high gaining bulls. Dam on 4 progeny Avg. WW-106, YW-109. She raised one of our high selling bulls last year. Granddam on 8 calves Avg. BW-95, WW-106, YW-105, MPPA-105.

33 FORSTER DOMAIN 3117

D.O.B. 5/8/2023 REG# 4839736 TATTOO 3117 / FRR 100% AR A

BECKTON DOMINOR T122 Z1		Data	Ratio
3SCC DOMAIN A163	C. Ease	Star	*
OKCC RED DOMAIN 108J	Act. BW	80	102
3SCC EUCLA X723	Adj. WW	589	95
RED HILL B571 JULIAN 84S	Adj. YW		103
OKCC MISS PRIDE D157	ADG		103
OKCC MISS Z124	SC	38	
BECKTON CODY U659 K1	Ultrasound		
FORSTER CODY A412	%IMF	81	
FORSTER PANSY H007	REA	105	
FORSTER FLO JO Y073	FAT	157	
RED SSS ENDORSE 639X			
FORSTER PANSY Z011			
FORSTER PANSY 6004			
MPPA 98	DAM AGE 3		

HB	GM	CED	BW	WW	YW	MILK	ME	HPG	CEM	STAY	MARB	REA	FAT	
EPD	65	47	16	-1.4	65	107	26	3	12	7	17	0.36	0.23	0.03
Top%	26	61	16	58	51	45	52	44	36	61	18	70	32	69

He is a wide, long topped bull with depth of body. Very nice phenotype. He will catch your eye. Granddam on 11 natural calves Avg. BW - 97, WW-101, YW-100, IMF-110, REA-108. She raised one of our herd bulls, Forster Blockade D051.

31 FORSTER JET 3106

D.O.B. 5/7/2023 REG# 4839714 TATTOO 3106 / FRR 100% AR A

SANDERSON EPIC JOURNEY		Data	Ratio
CBR EPIC 4144-6215	C. Ease	Star	*
SODAK EPIC F747	Act. BW	84	102
SODAK PRINCESS 2087	Adj. WW	605	97
SODAK PRINCESS X035	Adj. YW		98
JSG UNO 101W	ADG		99
FORSTER CINEMA Z104	SC	41	
FORSTER JESSIE D204	Ultrasound		
FORSTER JESSIE Z091	%IMF	9	
FORSTER JESSIE 6153	REA	92	
MPPA 95	FAT	88	
DAM AGE 7			

HB	GM	CED	BW	WW	YW	MILK	ME	HPG	CEM	STAY	MARB	REA	FAT	
EPD	71	32	11	0.3	59	93	23	2	14	6	17	0.2	0.06	0.01
Top%	16	86	71	85	75	74	80	41	11	74	15	94	67	33

Wide, long topped bull with depth of body, rib, & flank. He has good capacity and real good feet.

34 FORSTER DOMAIN 3219

D.O.B. 5/21/2023 REG# 4839942 TATTOO 3219 / FRR 100% AR A

BECKTON DOMINOR T122 Z1		Data	Ratio
3SCC DOMAIN A163	C. Ease	Star	*
OKCC RED DOMAIN 108J	Act. BW	82	105
3SCC EUCLA X723	Adj. WW	622	100
RED HILL B571 JULIAN 84S	Adj. YW		106
OKCC MISS PRIDE D157	ADG		114
OKCC MISS Z124	SC	36	
FORSTER HEATER 517	Ultrasound		
FORSTER BEACON F056	%IMF	101	
FORSTER TIDY BEE Z075	REA	105	
FORSTER CALANDRA H134	FAT	75	
FORSTER EPIC B020			
FORSTER CALANDRA E092			
FORSTER CALANDRA B123			
MPPA 105	DAM AGE 3		

HB	GM	CED	BW	WW	YW	MILK	ME	HPG	CEM	STAY	MARB	REA	FAT	
EPD	54	64	14	-0.2	77	131	25	11	12	7	16	0.39	0.36	0.02
Top%	48	23	28	80	12	7	56	86	35	53	34	59	17	60

Wide, level topped bull with depth of body. He has good capacity and good ADG. Dam on 3 calves Avg. WW-107, YW-106.

35 FORSTER DOMAIN 3074

D.O.B. 5/5/2023 REG# 4839646 TATTOO 3074 / FRR 100% AR A

		Data	Ratio
3SCC DOMAIN A163		C. Ease	Star **
3SCC EUCLA X723		Act. BW	75 96
OKCC RED DOMAIN 108J		Adj. WW	597 96
OKCC MISS PRIDE D157		Adj. YW	99
OKCC MISS Z124		ADG	102
FORSTER HEATER 517		SC	41
FORSTER BEACON F056		Ultrasound	
FORSTER TIDY BEE Z075		%IMF	95
FORSTER JERI H123		REA	96
FORSTER JERI E094		FAT	75
FORSTER WIDESCREEN Z077			
FORSTER JERI X064			
MPPA 100	DAM AGE 3		

HB	GM	CED	BW	WW	YW	MILK	ME	HPG	CEM	STAY	MARB	REA	FAT	
EPD	53	57	15	-1.2	74	119	25	9	12	7	16	0.39	0.32	0.02
Top%	48	35	18	62	20	21	57	79	35	58	34	59	20	58

2-star calving ease bull with a wide, long top. He has depth of body and real good feet. Dam raised one of our top heifer bulls last year as a first calf heifer.

36 FORSTER STRYDER 3279

D.O.B. 6/11/2023 REG# 4840062 TATTOO 3279 / FRR 100% AR A

		Data	Ratio
FORSTER HEATER 517		C. Ease	Star *
FORSTER SEEKER F156		Act. BW	86 105
3SCC VERNA Z53		Adj. WW	677 109
FORSTER STRYDER H050		Adj. YW	98
FORSTER NAV B002		ADG	79
FORSTER DREAM BEE F194		SC	40
FORSTER DREAM BEE A094		Ultrasound	
DEKAP RED DALLES 345		%IMF	118
RED BBCC PRESIDIO 5Z		REA	78
FORSTER BELGA D079		FAT	75
RED KBJ LASSIE 133X			
RHRA GOLD RUSH 402 17T			
FORSTER BELGA 9047			
FORSTER BELGA 2079			
MPPA 102	DAM AGE 7		

HB	GM	CED	BW	WW	YW	MILK	ME	HPG	CEM	STAY	MARB	REA	FAT	
EPD	47	61	8	0.5	66	99	31	12	11	5	17	0.5	0.01	0.01
Top%	61	29	96	88	46	63	11	91	53	91	20	33	77	45

He has a wide, long top with a big WW & Marbling.



37 FORSTER BROADCAST 3110

D.O.B. 5/7/2023 REG# 4839722 TATTOO 3110 / FRR 100% AR A

		Data	Ratio
FORSTER WIDESCREEN Z077		C. Ease	Star *
FORSTER WIDESCREEN E084		Act. BW	81 101
FORSTER BROADCAST H291		Adj. WW	680 109
FORSTER CAMILLA Z082		Adj. YW	108
FORSTER HEATER Y153		ADG	105
FORSTER DARLA B520		SC	40
FORSTER DARLA Y191		Ultrasound	
CBR MOONSHINE 26-48		%IMF	106
FORSTER MOON D156		REA	114
FORSTER COPPERQUEEN B113		FAT	157
FORSTER WIDESCREEN Z077			
FORSTER LORI E071			
FORSTER LORI Z118			
MPPA 107	DAM AGE 4		

HB	GM	CED	BW	WW	YW	MILK	ME	HPG	CEM	STAY	MARB	REA	FAT	
EPD	64	32	12	-0.2	65	101	33	3	12	5	18	0.4	0.28	0.01
Top%	27	87	69	80	54	59	4	46	47	86	13	53	25	40

He has depth of body, rib, & flank. He has a wide, long, level top. He is thick muscled with moderate BW. An exceptional set of balance performance #'s across the board. He has really good feet too. Dam on 4 calves Avg. BW-101, WW-110, YW-109, IMF-109, REA-104.



38 FORSTER BROADCAST 3288

D.O.B. 6/14/2023 REG# 4840080 TATTOO 3288 / FRR 100% AR A

		Data	Ratio
FORSTER WIDESCREEN Z077		C. Ease	Star **
FORSTER WIDESCREEN E084		Act. BW	78 95
FORSTER BROADCAST H291		Adj. WW	634 102
FORSTER CAMILLA Z082		Adj. YW	105
FORSTER HEATER Y153		ADG	110
FORSTER DARLA B520		SC	40
FORSTER DARLA Y191		Ultrasound	
BECKTON EPIC X796 J5		%IMF	113
FORSTER EPIC B020		REA	103
3SCC VERNA Z30		FAT	101
FORSTER LEGEND 8213			
FORSTER JEFF A099			
FORSTER JEFF Y107			
MPPA 102	DAM AGE 7		

HB	GM	CED	BW	WW	YW	MILK	ME	HPG	CEM	STAY	MARB	REA	FAT	
EPD	67	48	15	-2.4	59	96	32	6	12	7	18	0.44	0.24	0.01
Top%	22	59	27	39	73	70	7	66	44	42	11	45	31	45

He has a wide, long, level top with depth of body, rib, & flank. He has good capacity & nice #'s across the board. Dam on 7 calves Avg. BW-96, WW-103, YW-104, IMF-112, REA-108.

39 FORSTER JET 3232

D.O.B. 5/25/2023 REG# 4839968 TATTOO 3232 / FRR 100% AR A

SANDERSON EPIC JOURNEY		Data	Ratio
CBR EPIC 4144-8215		C. Ease	Star *
CBR MISS MONNIE 8340-4144		Act. BW	84 102
SODAK EPIC F747		Adj. WW	653 105
SODAK OSCAR T322/W558		Adj. YW	104
SODAK PRINCESS 2087		ADG	103
SODAK PRINCESS X035		SC	40.5
BECKTON EPIC X796 J5		Ultrasound	
FORSTER EPIC B020		%IMF	95
3SCC VERNA Z30		REA	110
FORSTER PANSY E104		FAT	138
FORSTER ANGUS X004			
FORSTER PANSY A403			
FORSTER PANSY Y039			
MPPA 99 DAM AGE 6			

HB	GM	CED	BW	WW	YW	MILK	ME	HPG	CEM	STAY	MARB	REA	FAT	
EPD	73	34	12	0	67	105	26	4	14	6	17	0.23	0.23	0.02
Top%	14	84	58	82	45	47	47	50	11	65	16	91	32	56

He is a wide, long, level topped bull with depth of body and rib. He has solid performance #'s across the board.

40 FORSTER HISTORY 3056

D.O.B. 5/3/2023 REG# 4839610 TATTOO 3056 / FRR 100% AR A

5L BLOCKADE 2218-30B		Data	Ratio
FORSTER BLOCKADE D057		C. Ease	Star *
FORSTER CAMILLA Z045		Act. BW	86 105
FORSTER HISTORY G025		Adj. WW	693 111
BECKTON CODY U659 K1		Adj. YW	111
FORSTER COPPERQUEEN C123		ADG	111
FORSTER COPPERQUEEN 9055		SC	40
VGW NAVIGATOR 010		Ultrasound	
FORSTER NAV B002		%IMF	76
PFFR MS NANCY 8007		REA	111
FORSTER FLO JO D226		FAT	130
LMB GOLDEN BOY 719			
FORSTER FLO JO 3077			
MISS BRENNER 4102			
MPPA 102 DAM AGE 7			

HB	GM	CED	BW	WW	YW	MILK	ME	HPG	CEM	STAY	MARB	REA	FAT	
EPD	67	51	13	-1.8	75	122	31	11	11	6	19	0.29	0.41	0.01
Top%	23	51	49	49	17	16	10	89	55	67	7	82	8	45

He has wide, long, level top with depth of body, rib, & flank. He has good capacity. One of the top performance bulls. Dam progeny Avg. on 7 calves BW-97, WW-103, YW-107.



41 FORSTER HISTORY 3205

D.O.B. 5/18/2023 REG# 4839912 TATTOO 3205 / FRR 100% AR A

5L BLOCKADE 2218-30B		Data	Ratio
FORSTER BLOCKADE D057		C. Ease	Star *
FORSTER CAMILLA Z045		Act. BW	80 97
FORSTER HISTORY G025		Adj. WW	702 113
BECKTON CODY U659 K1		Adj. YW	110
FORSTER COPPERQUEEN C123		ADG	106
FORSTER COPPERQUEEN 9055		SC	39
RHRA GOLD RUSH 402 17T		Ultrasound	
FORSTER GOLD RUSH A031		%IMF	112
FORSTER BLUE 6185		REA	105
FORSTER BONNEBELLE D153		FAT	75
5L FULL THROTTLE 2237-340W			
3SCC BONNEBELLE Z111			
3SCC BONNEBELLE X56			
MPPA 108 DAM AGE 7			

HB	GM	CED	BW	WW	YW	MILK	ME	HPG	CEM	STAY	MARB	REA	FAT	
EPD	70	52	14	-2	81	126	30	8	11	7	18	0.44	0.36	0.01
Top%	18	49	28	46	6	11	14	76	56	58	10	45	17	40

Wide topped bull with depth of body, rib, & flank. He is soggy made in a moderate package. He has exceptional performance #'s and scanned good for carcass. Dam on 7 calves Avg. WW-109, YW-107, IMF-106, REA-102. She had full sister to this bull the year prior & did just as good. She is also the dam to our Heifer we donated to the ND Red Angus Association Red Select Sale. Thank You Kaitlyn, this is her cow!



42 FORSTER RECON 3195

D.O.B. 5/16/2023 REG# 4839892 TATTOO 3195 / FRR 100% AR A

S A V RESOURCE 1441		Data	Ratio
FORSTER RESOURCE D094		C. Ease	Star *
FORSTER COPPER LASS 9082		Act. BW	79 96
FORSTER RESOURCE G079		Adj. WW	716 115
FORSTER LEGEND 8213		Adj. YW	109
FORSTER CALANDRA Z086		ADG	98
FORSTER CALANDRA 9135		SC	39
FORSTER WIDESCREEN Z077		Ultrasound	
FORSTER WIDESCREEN C193		%IMF	101
FORSTER DIXIE 6058		REA	108
FORSTER SADIE F059		FAT	101
BECKTON CODY U659 K1			
FORSTER SADIE B098			
FORSTER SADIE 8162			
MPPA 102 DAM AGE 5			

HB	GM	CED	BW	WW	YW	MILK	ME	HPG	CEM	STAY	MARB	REA	FAT	
EPD	62	30	16	-2.9	67	105	22	5	12	8	17	0.25	0.4	0.01
Top%	31	89	11	30	45	47	83	58	48	30	24	88	9	45

He has a wide, level top with depth of body. He has good capacity with real good performance #'s. Dam did a good job. He will catch your eye.

43 FORSTER RECON 3272

D.O.B. 6/6/2023 REG# 4840048 TATTOO 3272 / FRR 100% AR 2

S A V RESOURCE 1441		Data	Ratio
FORSTER RESOURCE D094	FORSTER COPPER LASS 9082	C. Ease	Star *
FORSTER RESOURCE G079	FORSTER LEGEND 8213	Act. BW	84 102
FORSTER CALANDRA Z086	FORSTER CALANDRA 9135	Adj. WW	622 100
		Adj. YW	101
		ADG	103
FORSTER BELINDA F076	FORSTER SEN 7142	SC	38
	FORSTER UNITS Y012	Ultrasound	
	FORSTER CAMILLA 9083	%iMF	130
	5L NORSE DESIGN 673-5035	REA	95
	FORSTER JERI 8151	FAT	63
	FORSTER JERI 5028		

EPD	HB	GM	CED	BW	WW	YW	MILK	ME	HPG	CEM	STAY	MARB	REA	FAT
56	52	15	-2.6	61	102	23	9	11	6	18	0.29	0.35	0.02	
Top%	44	48	18	34	67	57	80	81	53	67	13	82	17	54

He has a wide, long, level top with depth of body, rib, & flank. He has good capacity, is eye catching, and has balanced #'s. HE WILL SELL AS A 100% AR - CATEGORY 2.

45 FORSTER RECON 3083

D.O.B. 5/5/2023 REG# 4839668 TATTOO 3083 / FRR 100% AR A

S A V RESOURCE 1441		Data	Ratio
FORSTER RESOURCE D094	FORSTER COPPER LASS 9082	C. Ease	Star *
FORSTER RESOURCE G079	FORSTER LEGEND 8213	Act. BW	81 99
FORSTER CALANDRA Z086	FORSTER CALANDRA 9135	Adj. WW	649 104
		Adj. YW	98
		ADG	88
FORSTER JERI C039	FORSTER SEN 7142	SC	38
	FORSTER UNITS Y012	Ultrasound	
	FORSTER CAMILLA 9083	%iMF	111
	5L NORSE DESIGN 673-5035	REA	98
	FORSTER JERI 8151	FAT	118
	FORSTER JERI 5028		

EPD	HB	GM	CED	BW	WW	YW	MILK	ME	HPG	CEM	STAY	MARB	REA	FAT
70	43	15	-1.5	54	86	23	4	13	7	18	0.31	0.32	0.02	
Top%	18	69	26	56	89	85	80	51	32	42	11	79	20	54

Wide, long, level top with depth of body. He is dark red, thick made, with real good feet. He is TAME! Good WW & scanned good for marbling. Dam on 8 natural calves WW-105.

44 FORSTER RECON 3181

D.O.B. 5/15/2023 REG# 4839862 TATTOO 3181 / FRR 100% AR A

S A V RESOURCE 1441		Data	Ratio
FORSTER RESOURCE D094	FORSTER COPPER LASS 9082	C. Ease	Star **
FORSTER RESOURCE G079	FORSTER LEGEND 8213	Act. BW	78 96
FORSTER CALANDRA Z086	FORSTER CALANDRA 9135	Adj. WW	710 114
		Adj. YW	108
		ADG	98
FORSTER LORI F246	FORSTER WIDESCREEN Z077	SC	39.5
	FORSTER WIDESCREEN C193	Ultrasound	
	FORSTER DIXIE 6058	%iMF	88
	BASIN HOBO 3003	REA	106
	FORSTER LORI 6107	FAT	109
	FORSTER LORI 0112		

EPD	HB	GM	CED	BW	WW	YW	MILK	ME	HPG	CEM	STAY	MARB	REA	FAT
59	46	14	-1.8	64	105	24	9	11	7	18	0.34	0.28	0.02	
Top%	37	62	31	49	56	47	68	81	61	50	14	73	25	54

He has depth of body, rib, & flank with a wide, long, level top. He is thick made and easy on the eyes. Cow bull with calving ease. He has a big WW. Granddam was in our flush program.

46 FORSTER RECON 3120

D.O.B. 5/8/2023 REG# 4839742 TATTOO 3120 / FRR 100% AR A

S A V RESOURCE 1441		Data	Ratio
FORSTER RESOURCE D094	FORSTER COPPER LASS 9082	C. Ease	Star ***
FORSTER RESOURCE G079	FORSTER LEGEND 8213	Act. BW	70 85
FORSTER CALANDRA Z086	FORSTER CALANDRA 9135	Adj. WW	544 87
		Adj. YW	92
		ADG	99
FORSTER MAXINE D083	RED PAT 4475	SC	39
	FORSTER PAT 6140	Ultrasound	
	FORSTER COPPER QUEEN 2119	%iMF	94
	RED CROWFOOT 9144W	REA	101
	CBR RED MAXINE M82-M21	FAT	101
	CBR CLARECE M31-M82		

EPD	HB	GM	CED	BW	WW	YW	MILK	ME	HPG	CEM	STAY	MARB	REA	FAT
75	47	16	-2.6	57	90	19	-1	12	9	17	0.33	0.35	0.02	
Top%	11	61	13	34	80	80	96	26	39	15	19	75	17	56

Calve ease deluxe bull. He has depth of body, is dark red, and is fancy looking.



44



47 FORSTER RECON 3037

D.O.B. 5/1/2023 REG# 4839574 TATTOO 3037 / FRR 100% AR A

S A V RESOURCE 1441		Data	Ratio
FORSTER RESOURCE D094		C. Ease	Star *
FORSTER COPPER LASS 9082		Act. BW	80 97
FORSTER RESOURCE G079	FORSTER LEGEND 8213	Adj. WW	639 103
FORSTER CALANDRA Z086	FORSTER CALANDRA 9135	Adj. YW	107
	BECKTON CODY K1 P014	ADG	113
	BECKTON CODY U659 K1	SC	40
	BKT PINE MARIE P351 EP	Ultrasound	
FORSTER COPPERQUEEN C027	FORSTER NORTHERN 7057	%IMF	89
FORSTER ALINA X051	FORSTER ALINA 5083	REA	101
		FAT	104

EPD	HB	GM	CED	BW	WW	YW	MILK	ME	HPG	CEM	STAY	MARB	REA	FAT
67	67	45	16	-2.1	59	99	23	4	12	7	18	0.27	0.2	0.01
Top%	23	65	14	43	73	63	75	50	35	45	14	85	38	45

He has a wide, long, level top. He is thick and fancy made. He has good performance #'s across the board. He will catch your eye in the pen! Dam raised 8 natural calves until last summer when she got struck by lightning.



47

49 FORSTER PRODUCT 3269

D.O.B. 6/4/2023 REG# 4840042 TATTOO 3269 / FRR 100% AR A

COLLIER FINAL PRODUCT B389		Data	Ratio
COLLIER FINISHED PRODUCT		C. Ease	Star ***
COLLIER AMY B385		Act. BW	73 89
KUHNS FINISHED PRODUCT H032	8001 KUHN'S CHEY BOND	Adj. WW	644 104
KUHNS BAILEY BOND Y112	KUHNS BAILEY LOGAN 7032	Adj. YW	103
	5L DEFENDER 560-30Z	ADG	102
	5L BLOCKADE 2218-30B	SC	39
	5L OPAL 656-2218	Ultrasound	
FORSTER BLUE D034	FORSTER NORTHERN 7057	%IMF	104
FORSTER BLUE X066	FORSTER BLUE 6185	REA	100
		FAT	50

EPD	HB	GM	CED	BW	WW	YW	MILK	ME	HPG	CEM	STAY	MARB	REA	FAT
63	63	53	15	-4.1	59	97	22	7	12	7	18	0.34	0.41	0.01
Top%	30	46	25	13	73	66	82	69	34	58	14	73	8	35

Calving ease deluxe bull with a long, level top. He is smooth made and easy on the eyes. He has balanced #'s across the board.



49

48 FORSTER PRODUCT 3256

D.O.B. 6/1/2023 REG# 4840018 TATTOO 3256 / FRR 100% AR A

COLLIER FINAL PRODUCT B389		Data	Ratio
COLLIER FINISHED PRODUCT		C. Ease	Star **
COLLIER AMY B385		Act. BW	77 94
KUHNS FINISHED PRODUCT H032	8001 KUHN'S CHEY BOND	Adj. WW	635 102
KUHNS BAILEY BOND Y112	KUHNS BAILEY LOGAN 7032	Adj. YW	98
	VGW FIRE KING 128	ADG	91
	RED BLAZE V415	SC	37
	BJB LAKOTA 0117	Ultrasound	
FORSTER COPPERLASS E089	BECKTON CODY U659 K1	%IMF	96
FORSTER COPPER LASS Y002	FORSTER COPPER LASS 9116	REA	95
		FAT	88

EPD	HB	GM	CED	BW	WW	YW	MILK	ME	HPG	CEM	STAY	MARB	REA	FAT
61	61	50	14	-3.2	57	94	23	10	14	6	18	0.38	0.12	0.03
Top%	33	54	35	25	81	72	73	83	17	74	11	65	54	69

He is a 2-star, calving ease bull with positive WW #'s.

50 FORSTER PRODUCT 3209

D.O.B. 5/19/2023 REG# 4839920 TATTOO 3209 / FRR 100% AR A

COLLIER FINAL PRODUCT B389		Data	Ratio
COLLIER FINISHED PRODUCT		C. Ease	Star *
COLLIER AMY B385		Act. BW	86 105
KUHNS FINISHED PRODUCT H032	8001 KUHN'S CHEY BOND	Adj. WW	679 109
KUHNS BAILEY BOND Y112	KUHNS BAILEY LOGAN 7032	Adj. YW	96
	5L DEFENDER 560-30Z	ADG	75
	5L BLOCKADE 2218-30B	SC	37
	5L OPAL 656-2218	Ultrasound	
FORSTER LORI E081	FORSTER HOBO 6130	%IMF	102
FORSTER LORI X112	FORSTER LORI 2165	REA	88
		FAT	111

EPD	HB	GM	CED	BW	WW	YW	MILK	ME	HPG	CEM	STAY	MARB	REA	FAT
55	55	45	12	-1.8	61	92	22	5	12	5	17	0.4	0.23	0.02
Top%	44	65	65	49	69	77	83	57	43	84	21	53	32	54

A long, level topped bull who is also long bodied. He has a big WW.

51 FORSTER PRODUCT 3160

D.O.B. 5/13/2023 REG# 4839820 TATTOO 3160 / FRR 100% AR A

COLLIER FINAL PRODUCT B389		Data	Ratio
COLLIER FINISHED PRODUCT			
COLLIER AMY B385		C. Ease	Star *
KUHNS FINISHED PRODUCT H071	5L HOB0 DESIGN 980-239Z	Act. BW	83 101
	KUHNS BONITA E125	Adj. WW	646 104
	KUHNS DUCHESS A025	Adj. YW	107
	CBR MOONSHINE 26-48	ADG	111
FORSTER COPPERQUEEN	FORSTER MOON D091	SC	41
	FORSTER BELA B173	Ultrasound	
	FORSTER WIDESCREEN Z077	%IMF	70
	FORSTER COPPERQUEEN D112	REA	110
	FORSTER COPPERQUEEN 5081	FAT	101

EPD	HB	GM	CED	BW	WW	YW	MILK	ME	HPG	CEM	STAY	MARB	REA	FAT
61	61	53	13	-0.5	72	116	25	12	14	8	16	0.32	0.37	0.02
33	33	46	54	75	25	25	56	90	13	40	30	77	16	52

Wide, long, level topped bull with depth of body, rib, & flank. He has real good feet. He is fancy looking with nice performance #'s across the board.



53 FORSTER HIGHLIGHT 3119

D.O.B. 5/8/2023 REG# 4839740 TATTOO 3119 / FRR 100% AR A

FORSTER HEATER 517		Data	Ratio
FORSTER BEACON F056			
FORSTER TIDY BEE Z075		C. Ease	Star **
FORSTER HIGHLIGHT 1093	FORSTER NORTH 9017	Act. BW	74 95
	FORSTER CAMILLA Z045	Adj. WW	601 97
	FORSTER CAMILLA 8042	Adj. YW	98
	FORSTER HEATER 517	ADG	98
FORSTER FOREST H082	FORSTER RILEY E123	SC	40
	FORSTER COPPER QUEEN C104	Ultrasound	
	FORSTER CODY A412	%IMF	129
	FORSTER FOREST F007	REA	96
	FORSTER FOREST A035	FAT	132

EPD	HB	GM	CED	BW	WW	YW	MILK	ME	HPG	CEM	STAY	MARB	REA	FAT
36	36	49	14	-2	64	101	25	12	11	6	14	0.47	0.13	0.01
81	81	55	39	46	58	58	55	89	55	67	53	39	52	35

Smooth made, calving ease bull. Real good feet and one of the top marbling bulls. Dam progeny on 3 calves WW-106, YW-105, IMF-109, REA-102.

54 FORSTER SCAMP 3042

D.O.B. 5/2/2023 REG# 4839584 TATTOO 3042 / FRR 100% AR A

BECKTON SCAMP B720 L4		Data	Ratio
BECKTON SCAMP E175 N5			
BECKTON BELGA W103 N		C. Ease	Star ***
BECKTON SCAMP H156 W6	BECKTON WARRIOR C695 W6	Act. BW	60 81
	BECKTON MINERVA E078 W	Adj. WW	675 112
	BECKTON MINERVA C549 W	Adj. YW	110
	5L BLOCKADE 2218-30B	ADG	106
FORSTER JESSIE 1228	FORSTER BLOCKADE D057	SC	40
	FORSTER CAMILLA Z045	Ultrasound	
	FORSTER PAT 6140	%IMF	132
	FORSTER JESSIE A137	REA	108
	FORSTER JESSIE 9102	FAT	116

EPD	HB	GM	CED	BW	WW	YW	MILK	ME	HPG	CEM	STAY	MARB	REA	FAT
56	56	50	17	-5.1	63	103	39	7	10	7	17	0.52	0.12	0.02
43	43	55	9	6	61	52	1	71	78	45	17	30	54	56

He is a long-bodied bull with a long, level top. He is calving ease deluxe with extremely good performance & carcass #'s. Dam, Forster Jessie 1228, on two calves Avg BW-91, WW-116. She is doing very good. Granddam, A137, on 9 calves avg. BW-99, WW-107, YW-104, MPPA-106.

52 FORSTER HIGHLIGHT 3046

D.O.B. 5/2/2023 REG# 4839592 TATTOO 3046 / FRR 100% AR A

FORSTER HEATER 517		Data	Ratio
FORSTER BEACON F056			
FORSTER TIDY BEE Z075		C. Ease	Star *
FORSTER HIGHLIGHT 1093	FORSTER NORTH 9017	Act. BW	83 106
	FORSTER CAMILLA Z045	Adj. WW	679 109
	FORSTER CAMILLA 8042	Adj. YW	108
	BASIN TREND SETTER 45S5	ADG	106
FORSTER COPPER QUEEN H266	FORSTER TREND B005	SC	38
	3SCC BONNEBELLE Z111	Ultrasound	
	FORSTER ANGUS X004	%IMF	90
	FORSTER COPPERQUEEN B029	REA	97
	FORSTER COPPERQUEEN 6156	FAT	101

EPD	HB	GM	CED	BW	WW	YW	MILK	ME	HPG	CEM	STAY	MARB	REA	FAT
45	45	63	11	-0.8	73	114	23	8	11	6	15	0.57	0.12	0.02
66	66	26	72	71	22	29	73	73	71	77	46	22	54	56

He is a long bodied, free moving bull with good performance #'s across the board. Dam is a top producer. Going back 5 generations in a row of consistently producing.

55 FORSTER B-RAD 3216

D.O.B. 5/21/2023 REG# 4839936 TATTOO 3216 / FRR 100% AR A

JEFFRIES DEPTH CHARGE 556B		Data	Ratio
RED ARO 8113F			
RED ARO QUEEN 105		C. Ease	Star **
FORSTER B-RAD 1025	FORSTER MOON D156	Act. BW	78 100
	FORSTER CAMILLA G206	Adj. WW	632 102
	FORSTER CAMILLA E052	Adj. YW	96
	BASIN TREND SETTER 45S5	ADG	87
FORSTER FLO JO H223	FORSTER TREND B005	SC	38.5
	3SCC BONNEBELLE Z111	Ultrasound	
	RED BBCC PRESIDIO 5Z	%IMF	113
	FORSTER FLO JO D089	REA	88
	FORSTER FLO JO Y196	FAT	101

EPD	HB	GM	CED	BW	WW	YW	MILK	ME	HPG	CEM	STAY	MARB	REA	FAT
41	41	61	12	-0.8	66	104	22	10	11	8	14	0.46	0.23	0.03
73	73	28	65	71	46	50	86	84	65	40	59	41	32	76

He has depth of body & rib and is wide topped. He is an eye catching, 2-star bull. Dam weaned another big calf this year.

56 FORSTER SHAG 3248

D.O.B. 5/31/2023 REG# 4840000 TATTOO 3248 / FRR 100% AR A

SHAG MAXING 945	RED FLYING K MAX 159	RED ML MAX 862U	Data	Ratio
	RED FLYING K ANITA 764T		C. Ease	Star *
	JSG UNO 101W		Act. BW	86 106
	ARO MS UNO 273		Adj. WW	687 110
FORSTER TIDY BEE Y081	ARO LADY GRAND 806		Adj. YW	104
	5L NORSE DESIGN 673-5035		ADG	92
	FORSTER NORTHERN 7057		SC	42
	FORSTER COPPRQUEEN 1080		Ultrasound	
MPPA 104 DAM AGE 12	ARO RAM ROD 123		%IMF	68
	FORSTER TIDY BEE 6122		REA	100
	FORSTER TIDY BEE 2099		FAT	101

EPD	107	39	14	-0.9	55	88	26	-3	14	8	22	0.34	0.15	0
Top%	1	76	39	66	86	83	51	22	17	32	1	73	49	27

He has a long, level top with excellent feet. He has a big WW. His dam had 10 natural calves. Keep the daughters!

59 FORSTER RECON 3026

D.O.B. 4/29/2023 REG# 4839550 TATTOO 3026 / FRR 100% AR A

FORSTER RESOURCE G079	S A V RESOURCE 1441	Data	Ratio	
	FORSTER RESOURCE D094	C. Ease	Star *	
	FORSTER COPPER LASS 9082	Act. BW	82 100	
	FORSTER LEGEND 8213	Adj. WW	613 99	
FORSTER KAREN E018	FORSTER CALANDRA Z086		Adj. YW	107
	FORSTER CALANDRA 9135		ADG	119
	RHRA GOLD RUSH 402 17T		SC	37
	FORSTER GOLD RUSH A031		Ultrasound	
MPPA 102 DAM AGE 6	FORSTER BLUE 6185		%IMF	106
	BECKTON DOMINOR T122 Z1		REA	104
	3SCC KAREN Z194		FAT	103

EPD	70	52	13	-0.9	66	108	25	6	14	6	17	0.35	0.34	0.02
Top%	18	48	44	66	46	41	58	63	13	65	15	71	18	58

He is a wide topped, long bodied, and thick made bull. He is one of the top gaining bulls in the sale.

57 FORSTER DOMAIN 3196

D.O.B. 5/16/2023 REG# 4839894 TATTOO 3196 / FRR 100% AR A

OKCC RED DOMAIN 108J	BECKTON DOMINOR T122 Z1	Data	Ratio	
	3SCC DOMAIN A163	C. Ease	Star **	
	3SCC EUCLA X723	Act. BW	77 99	
	RED HILL B571 JULIAN 84S	Adj. WW	663 107	
FORSTER DIXIE H279	OKCC MISS PRIDE D157		Adj. YW	102
	OKCC MISS Z124		ADG	95
	RED BLAZE V415		SC	37
	FORSTER BLAZE E073		Ultrasound	
MPPA 101 DAM AGE 3	FORSTER COPPERQUEEN Z181		%IMF	80
	FORSTER PAT 6140		REA	101
	FORSTER DIXIE B088		FAT	101

EPD	44	58	16	-1.6	72	116	26	9	13	6	15	0.4	0.25	0.02
Top%	67	34	16	54	24	25	49	78	33	77	44	53	30	60

A wide, level topped bull with depth of body. He has real good WW. Granddam & Great Granddam are very good cows.

60 FORSTER HISTORY 3016

D.O.B. 4/27/2023 REG# 4839530 TATTOO 3016 / FRR 100% AR A

FORSTER HISTORY G025	5L BLOCKADE 2218-30B	Data	Ratio	
	FORSTER BLOCKADE D057	C. Ease	Star ***	
	FORSTER CAMILLA Z045	Act. BW	75 92	
	BECKTON CODY U659 K1	Adj. WW	709 114	
FORSTER CAMILLA A420	FORSTER COPPERQUEEN C123		Adj. YW	109
	FORSTER COPPERQUEEN 9055		ADG	100
	RED FLYING K GENERATOR 16U		SC	39.5
	FORSTER HEATER Y153		Ultrasound	
MPPA 106 DAM AGE 10	FORSTER LORI 8113		%IMF	110
	CWK 6486 625R		REA	108
	FORSTER CAMILLA X215		FAT	101

EPD	59	49	16	-3.4	72	114	30	12	11	7	18	0.34	0.39	0.01
Top%	36	55	16	22	26	29	14	90	71	45	11	73	12	35

Calving ease deluxe with some punch! He has a wide, long, level top with depth of body, rib, & flank. He is thick made in a moderate package. He is very docile and one of the top WW in sale. Dam, Forster Camilla A420, progeny Avg. on 9 calves – BW-95, WW-107, YW-106, IMF-115, REA-100, MPPA-106. Keep the daughters!

58 FORSTER DOMAIN 3067

D.O.B. 5/4/2023 REG# 4839632 TATTOO 3067 / FRR 100% AR A

OKCC RED DOMAIN 108J	BECKTON DOMINOR T122 Z1	Data	Ratio	
	3SCC DOMAIN A163	C. Ease	Star **	
	3SCC EUCLA X723	Act. BW	75 96	
	RED HILL B571 JULIAN 84S	Adj. WW	596 96	
FORSTER PENNY H126	OKCC MISS PRIDE D157		Adj. YW	99
	OKCC MISS Z124		ADG	103
	CBR MOONSHINE 26-48		SC	38
	FORSTER MOON D091		Ultrasound	
MPPA 101 DAM AGE 3	FORSTER BELA B173		%IMF	132
	RHRA GOLD RUSH 402 17T		REA	102
	FORSTER PENNY 9048		FAT	130

EPD	63	64	15	-1.1	67	112	29	8	13	7	17	0.45	0.33	0.03
Top%	29	23	27	64	44	33	19	76	22	45	22	43	19	73

Wide, long, level topped bull with depth of body. Nice head on this 2-star calving ease bull. He is one of the high marbling bulls. Dam on 3 calves Avg BW-94, WW-102, YW-101, IMF-133, REA-106. She raised one of our top Scamp sons last year. Granddam, Penny 9048, raised 10 natural calves Avg. BW-99, WW-107, YW-101, MPPA-106.



61 FORSTER HISTORY 3253

D.O.B. 6/1/2023 REG# 4840012 TATTOO 3253 / FRR 100% AR A

FORSTER HISTORY G025	5L BLOCKADE 2218-30B	Data	Ratio
	FORSTER BLOCKADE D057	C. Ease	Star **
	FORSTER CAMILLA Z045	Act. BW	79 96
	BECKTON CODY U659 K1	Adj. WW	652 105
	FORSTER COPPERQUEEN C123	Adj. YW	97
FORSTER PENNY E059	FORSTER COPPERQUEEN 9055	ADG	83
	VGW FIRE KING 128	SC	36.5
	RED BLAZE V415	Ultrasound	
	BJB LAKOTA 0117	%IMF	43
	RHRA GOLD RUSH 402 17T	REA	88
MPPA 104 DAM AGE 6	FORSTER PENNY 9048	FAT	88
	FORSTER PENNY 5203		

HB	GM	CED	BW	WW	YW	MILK	ME	HPG	CEM	STAY	MARB	REA	FAT	
EPD	58	37	15	-3	66	101	29	9	10	7	18	0.25	0.19	0.01
Top%	40	79	22	28	50	59	25	81	77	61	11	88	40	33

Long bodied, 2-star bull with a nice WW. Dam progeny on 6 calves Avg. WW-105. Granddam on 10 calves Avg. WW-107.

64 FORSTER JET 3204

D.O.B. 5/18/2023 REG# 4839910 TATTOO 3204 / FRR 100% AR A

SODAK EPIC F747	SANDERSON EPIC JOURNEY	Data	Ratio
	CBR EPIC 4144-6215	C. Ease	Star **
	CBR MISS MONNIE 8340-4144	Act. BW	80 99
	SODAK OSCAR T322/W558	Adj. WW	570 92
	SODAK PRINCESS Z087	Adj. YW	92
FORSTER SAGE G017	SODAK PRINCESS X035	ADG	92
	BECKTON CODY U659 K1	SC	36.5
	FORSTER CODY A412	Ultrasound	
	FORSTER FLO JO Y073	%IMF	87
	FORSTER LEGEND 8213	REA	101
MPPA 97 DAM AGE 4	FORSTER SAGE Z157	FAT	110
	FORSTER SAGE 9110		

HB	GM	CED	BW	WW	YW	MILK	ME	HPG	CEM	STAY	MARB	REA	FAT	
EPD	76	28	14	-1	53	82	26	1	14	6	19	0.23	0.13	0.01
Top%	10	91	37	66	90	90	53	36	14	69	7	91	52	42

He is a 2-star calving ease bull. He has a wide, level top with depth of body. He has excellent front feet.

62 FORSTER JET 3058

D.O.B. 5/3/2023 REG# 4839614 TATTOO 3058 / FRR 100% AR A

SODAK EPIC F747	SANDERSON EPIC JOURNEY	Data	Ratio
	CBR EPIC 4144-6215	C. Ease	Star **
	CBR MISS MONNIE 8340-4144	Act. BW	80 99
	SODAK OSCAR T322/W558	Adj. WW	653 105
	SODAK PRINCESS Z087	Adj. YW	101
FORSTER COUNTESS G018	SODAK PRINCESS X035	ADG	95
	BECKTON CODY U659 K1	SC	41
	FORSTER CODY A412	Ultrasound	
	FORSTER FLO JO Y073	%IMF	89
	BECKTON EPIC U841 KM	REA	109
MPPA 99 DAM AGE 4	FORSTER COUNTESS Y177	FAT	117
	FORSTER COUNTESS 9120		

HB	GM	CED	BW	WW	YW	MILK	ME	HPG	CEM	STAY	MARB	REA	FAT	
EPD	71	29	14	-1.3	62	95	27	4	13	7	18	0.25	0.16	0.01
Top%	16	90	33	59	66	70	39	53	31	58	10	88	46	45

Wide, long, level topped bull with depth of body. He has good capacity and is thick made. Good WW. Can use him on large heifers or cows.

65 FORSTER JET 3134

D.O.B. 5/9/2023 REG# 4839768 TATTOO 3134 / FRR 100% AR A

SODAK EPIC F747	SANDERSON EPIC JOURNEY	Data	Ratio
	CBR EPIC 4144-6215	C. Ease	Star *
	CBR MISS MONNIE 8340-4144	Act. BW	84 102
	SODAK OSCAR T322/W558	Adj. WW	636 102
	SODAK PRINCESS Z087	Adj. YW	98
FORSTER LORI D119	SODAK PRINCESS X035	ADG	90
	RED CROWFOOT MOONSHINE 2116Z	SC	38
	CBR MOONSHINE 26-48	Ultrasound	
	CBR HIGH CAPACITY 8170-26	%IMF	49
	FORSTER ANGUS X004	REA	91
MPPA 99 DAM AGE 7	FORSTER LORI B108	FAT	107
	FORSTER LORI 9209		

HB	GM	CED	BW	WW	YW	MILK	ME	HPG	CEM	STAY	MARB	REA	FAT	
EPD	73	23	11	-0.3	58	93	25	5	15	6	18	0.12	0.13	0.01
Top%	14	95	71	78	77	75	55	55	8	77	11	98	52	32

Wide, long topped bull with depth of body and rib. He has good capacity and is thick made.

63 FORSTER JET 3155

D.O.B. 5/12/2023 REG# 4839810 TATTOO 3155 / FRR 100% AR A

SODAK EPIC F747	SANDERSON EPIC JOURNEY	Data	Ratio
	CBR EPIC 4144-6215	C. Ease	Star ***
	CBR MISS MONNIE 8340-4144	Act. BW	71 89
	SODAK OSCAR T322/W558	Adj. WW	577 93
	SODAK PRINCESS Z087	Adj. YW	96
FORSTER JERI G211	SODAK PRINCESS X035	ADG	102
	5L BLOCKADE 2218-30B	SC	37
	FORSTER BLOCKADE D057	Ultrasound	
	FORSTER CAMILLA Z045	%IMF	94
	BECKTON CODY U659 K1	REA	97
MPPA 98 DAM AGE 4	FORSTER JERI B023	FAT	75
	FORSTER JERI 8151		

HB	GM	CED	BW	WW	YW	MILK	ME	HPG	CEM	STAY	MARB	REA	FAT	
EPD	81	41	16	-3.1	57	94	26	8	13	8	20	0.29	0.15	0.01
Top%	7	72	15	26	81	73	49	74	26	29	3	82	49	37

Calving ease deluxe bull with a wide, long top. He has depth of body and real good feet.



66 FORSTER RECON 3173

D.O.B. 5/15/2023 REG# 4839846 TATTOO 3173 / FRR 100% AR A

FORSTER RECON 1207	FORSTER RESOURCE D094	Data	Ratio
	FORSTER RESOURCE G079	C. Ease	***
	FORSTER CALANDRA Z086	Act. BW	77 102
	FORSTER CODY A412	Adj. WW	674 112
FORSTER CASSIDY 1057	FORSTER COPPERQUEEN F025	Adj. YW	105
	FORSTER COPPERQUEEN 9075	ADG	94
	JEFFRIES DEPTH CHARGE 556B	SC	37
	RED ARO 8113F		
MPPA 106 DAM AGE 2	RED ARO QUEEN 105	Ultrasound	
	FORSTER BLOCKADE D057	%IMF	83
	FORSTER CASSIDY G221	REA	100
	FORSTER CASSIDY Y015	FAT	87

EPD	HB	GM	CED	BW	WW	YW	MILK	ME	HPG	CEM	STAY	MARB	REA	FAT
69	69	44	15	-2	64	104	27	11	12	8	18	0.39	0.23	0.03
Top%	19	66	26	46	57	51	37	88	41	24	9	59	33	69

Calving ease deluxe bull that has a long, level top. He has depth of body, rib, & flank. He is smooth made with a big WW. Granddam on 4 calves Avg. WW-105, YW-108, MPPA-103.



68 FORSTER B-RAD 3017

D.O.B. 4/27/2023 REG# 4839532 TATTOO 3017 / FRR 100% AR A

FORSTER B-RAD 1042	JEFFRIES DEPTH CHARGE 556B	Data	Ratio
	RED ARO 8113F	C. Ease	***
	RED ARO QUEEN 105	Act. BW	64 86
	FORSTER HEATER B518	Adj. WW	598 99
FORSTER COPPERQUEEN 1214	FORSTER COPPERQUEEN G156	Adj. YW	99
	FORSTER COPPERQUEEN 6156	ADG	97
	CBR EPIC 4144-6215	SC	39
	SODAK EPIC F727		
MPPA 99 DAM AGE 2	SODAK PEGGY A236	Ultrasound	
	FORSTER WIDESCREEN Z077	%IMF	104
	FORSTER COPPERQUEEN C176	REA	105
	FORSTER COPPER QUEEN 8189	FAT	116

EPD	HB	GM	CED	BW	WW	YW	MILK	ME	HPG	CEM	STAY	MARB	REA	FAT
70	53	14	-3.3	53	87	27	6	13	8	18	0.53	0.11	0.01	
Top%	18	46	31	23	90	83	34	61	28	38	11	28	58	29

Calving ease deluxe bull! He has a long, level top. He is smooth made with petite head.

69 FORSTER SCAMP 3111

D.O.B. 5/8/2023 REG# 4839724 TATTOO 3111 / FRR 100% AR A

BECKTON SCAMP H156 W6	BECKTON SCAMP B720 L4	Data	Ratio
	BECKTON SCAMP F175 N5	C. Ease	***
	BECKTON BELGA W103 N	Act. BW	78 103
	BECKTON WARRIOR C695 W6	Adj. WW	631 104
FORSTER COUNTESS 1144	BECKTON MINERVA E078 W	Adj. YW	104
	BECKTON MINERVA C549 W	ADG	102
	FORSTER HEATER 517	SC	38
	FORSTER BEACON F056		
MPPA 100 DAM AGE 2	FORSTER TIDY BEE Z075	Ultrasound	
	FORSTER PAT 6140	%IMF	77
	FORSTER COUNTESS B042	REA	112
	FORSTER COUNTESS 9039	FAT	87

EPD	HB	GM	CED	BW	WW	YW	MILK	ME	HPG	CEM	STAY	MARB	REA	FAT
51	48	16	-3.3	67	108	32	10	11	7	16	0.49	0.1	0.02	
Top%	52	58	15	23	42	41	6	82	65	46	27	36	59	56

Heifer bull deluxe! He has a long, level top with depth of body, rib, & flank. Nice balanced #'s across the board.



67 FORSTER RECON 3019

D.O.B. 4/27/2023 REG# 4839536 TATTOO 3019 / FRR 100% AR A

FORSTER RECON 1207	FORSTER RESOURCE D094	Data	Ratio
	FORSTER RESOURCE G079	C. Ease	***
	FORSTER CALANDRA Z086	Act. BW	67 90
	FORSTER CODY A412	Adj. WW	584 97
FORSTER BLUE 1069	FORSTER COPPERQUEEN F025	Adj. YW	99
	FORSTER COPPERQUEEN 9075	ADG	102
	JEFFRIES DEPTH CHARGE 556B	SC	36
	RED ARO 8113F		
MPPA 98 DAM AGE 2	RED ARO QUEEN 105	Ultrasound	
	FORSTER CODY A412	%IMF	91
	FORSTER BLUE G063	REA	104
	FORSTER BLUE A401	FAT	102

EPD	HB	GM	CED	BW	WW	YW	MILK	ME	HPG	CEM	STAY	MARB	REA	FAT
68	43	16	-2.9	59	97	25	9	13	9	18	0.38	0.16	0.03	
Top%	21	69	12	29	73	67	54	80	31	21	13	64	47	69

Dark red, calving ease deluxe bull.

70 FORSTER SCAMP 3104

D.O.B. 5/7/2023 REG# 4839710 TATTOO 3104 / FRR 100% AR A

BECKTON SCAMP B720 L4		Data	Ratio
BECKTON SCAMP E175 N5		C. Ease	Star ***
BECKTON BELGA W103 N		Act. BW	74 99
BECKTON SCAMP H156 W6	BECKTON WARRIOR C695 W6	Adj. WW	632 105
BECKTON MINERVA E078 W	BECKTON MINERVA C549 W	Adj. YW	106
		ADG	108
	FORSTER BLOCKADE D051	SC	37.5
FORSTER ROOTZ F029	FORSTER CAMILLA C003	Ultrasound	
FORSTER CAMILLA 1060	FORSTER CONQ B003	%IMF	105
FORSTER CAMILLA E108	FORSTER CAMILLA C003	REA	120
		FAT	123
MPPA 96	DAM AGE 2		

HB	GM	CED	BW	WW	YW	MILK	ME	HPG	CEM	STAY	MARB	REA	FAT	
EPD	51	49	15	-2.6	73	121	30	16	10	7	18	0.5	0.19	0.03
Top%	53	56	22	34	21	18	14	97	80	59	13	33	40	67

Calving ease deluxe bull that is long topped and has depth of body. Nice performance #s across the board.

73 FORSTER SCAMP 3055

D.O.B. 5/3/2023 REG# 4839608 TATTOO 3055 / FRR 100% AR A

BECKTON SCAMP B720 L4		Data	Ratio
BECKTON SCAMP E175 N5		C. Ease	Star ***
BECKTON BELGA W103 N		Act. BW	64 86
BECKTON SCAMP H156 W6	BECKTON WARRIOR C695 W6	Adj. WW	595 99
BECKTON MINERVA E078 W	BECKTON MINERVA C549 W	Adj. YW	106
		ADG	117
	RED FLYING K MAX 159Y	SC	42
SHAG MAXING 945	ARO MS UNO 273	Ultrasound	
FORSTER JESSIE 1090	FORSTER BLOCKADE D051	%IMF	110
FORSTER JESSIE G012	FORSTER JESSIE C019	REA	100
		FAT	136
MPPA 105	DAM AGE 2		

HB	GM	CED	BW	WW	YW	MILK	ME	HPG	CEM	STAY	MARB	REA	FAT	
EPD	55	55	17	-5.2	62	108	35	12	11	8	18	0.5	-0.01	0.02
Top%	44	40	7	5	64	42	1	91	71	29	14	33	81	64

He is a calving ease deluxe bull! Long, level, top with depth of body. One of the top gaining bulls. Dam, Forster Jessie, weaned her 2nd calf this year with WW Rat-118. Granddam, Forster Jessie G012, is the dam to LOT 1. Definitely some very good cows behind this mama.



71 FORSTER SCAMP 3101

D.O.B. 5/6/2023 REG# 4839704 TATTOO 3101 / FRR 100% AR A

BECKTON SCAMP B720 L4		Data	Ratio
BECKTON SCAMP E175 N5		C. Ease	Star ***
BECKTON BELGA W103 N		Act. BW	77 102
BECKTON SCAMP H156 W6	BECKTON WARRIOR C695 W6	Adj. WW	627 104
BECKTON MINERVA E078 W	BECKTON MINERVA C549 W	Adj. YW	99
		ADG	90
	RED FLYING K MAX 159Y	SC	37.5
SHAG MAXING 945	ARO MS UNO 273	Ultrasound	
FORSTER TIDY BEE 1110	FORSTER JAKK C110	%IMF	99
FORSTER TIDY BEE G178	FORSTER TIDY BEE A422	REA	86
		FAT	152
MPPA 100	DAM AGE 2		

HB	GM	CED	BW	WW	YW	MILK	ME	HPG	CEM	STAY	MARB	REA	FAT	
EPD	57	42	15	-2.9	61	100	32	8	11	7	17	0.48	-0.24	0.02
Top%	41	71	17	30	67	61	7	75	53	42	21	37	98	60

Calving ease deluxe bull that is smooth made. Nice WW and has a tame disposition.

72 FORSTER SCAMP 3068

D.O.B. 5/5/2023 REG# 4839634 TATTOO 3068 / FRR 100% AR A

BECKTON SCAMP B720 L4		Data	Ratio
BECKTON SCAMP E175 N5		C. Ease	Star ***
BECKTON BELGA W103 N		Act. BW	76 101
BECKTON SCAMP H156 W6	BECKTON WARRIOR C695 W6	Adj. WW	570 94
BECKTON MINERVA E078 W	BECKTON MINERVA C549 W	Adj. YW	95
		ADG	96
	CBR EPIC 4144-6215	SC	37
SODAK EPIC F747	SODAK PRINCESS Z087	Ultrasound	
FORSTER JOAN 1220	FORSTER WIDESCREEN Z077	%IMF	110
FORSTER JOAN E041	FORSTER JOAN A023	REA	94
		FAT	87
MPPA 99	DAM AGE 2		

HB	GM	CED	BW	WW	YW	MILK	ME	HPG	CEM	STAY	MARB	REA	FAT	
EPD	47	47	14	-2.1	62	101	32	12	11	7	16	0.46	-0.05	0.02
Top%	60	61	29	43	64	58	5	89	59	50	29	41	86	52

Calving ease deluxe bull. He has a long, level top and is dark red.

74 FORSTER SCAMP 3014

D.O.B. 4/26/2023 REG# 4839526 TATTOO 3014 / FRR 100% AR A

BECKTON SCAMP B720 L4		Data	Ratio
BECKTON SCAMP E175 N5		C. Ease	Star ***
BECKTON BELGA W103 N		Act. BW	68 91
BECKTON SCAMP H156 W6	BECKTON WARRIOR C695 W6	Adj. WW	642 106
BECKTON MINERVA E078 W	BECKTON MINERVA C549 W	Adj. YW	110
		ADG	114
	CBR EPIC 4144-6215	SC	35
SODAK EPIC F727	SODAK PEGGY A236	Ultrasound	
FORSTER COPPERQUEEN 1130	FORSTER NAV B002	%IMF	116
FORSTER COPPERQUEEN E125	FORSTER COPPERQUEEN A128	REA	128
		FAT	102
MPPA 98	DAM AGE 2		

HB	GM	CED	BW	WW	YW	MILK	ME	HPG	CEM	STAY	MARB	REA	FAT	
EPD	49	52	13	-2.6	59	101	40	10	12	6	16	0.52	0.14	0.03
Top%	56	48	47	34	76	58	1	83	40	69	29	30	50	67

3 Star calving ease deluxe bull. He is very long bodied with tremendous performance & carcass #s. Granddam, Forster Copperqueen E125, on 6 calves Avg. WW -114, YW-109, MPPA-111. She cranks out the good ones every time!

75 FORSTER BROADCAST 3039

D.O.B. 5/1/2023 REG# 4839578 TATTOO 3039 / FRR 100% AR A

FORSTER WIDESCREEN Z077
 FORSTER WIDESCREEN E084
 FORSTER CAMILLA Z082
FORSTER BROADCAST H291
 FORSTER HEATER Y153
 FORSTER DARLA B520
 FORSTER DARLA Y191
 5L LEGEND 791-7065
 FORSTER LEGEND 8213
 FORSTER CAMILLA 5176
FORSTER JEZZ A099
 FORSTER GOLD 9059
 FORSTER JEZZ Y107
 FORSTER JEZZ 6139
 MPPA 97 DAM AGE 10

	Data	Ratio
C. Ease	Star	*
Act. BW	76	94
Adj. WW	658	106
Adj. YW		100
ADG		91
SC	38.5	
Ultrasound		
%IMF	125	
REA	97	
FAT	129	

HB	GM	CED	BW	WW	YW	MILK	ME	HPG	CEM	STAY	MARB	REA	FAT	
EPD	80	40	14	-2.4	57	87	29	-1	12	7	19	0.4	0.2	0.01
Top%	8	74	31	39	82	84	20	27	38	61	6	53	38	45

He is a wide topped bull with depth of body. He has good WW & Marbling scans. Dam raised 10 natural calves. Keep the daughters.

78 FORSTER SHAG 3031

D.O.B. 4/30/2023 REG# 4839560 TATTOO 3031 / FRR 100% AR A

RED FLYING K MAX 159Y
 RED FLYING K ANITA 764T
SHAG MAXING 945
 JSG UNO 101W
 ARO MS UNO 273
 ARO LADY GRAND 806
 MCPHEE PACIFIC PRIDE 4127
 KFRA PRIDE W8X
 KFRA RED RUBY 4108
3SCC DINA Z198
 GLACIER LOGAN 210
 LCC DINA NA450
 LCHMN DINA J1068
 MPPA 105 DAM AGE 11

	Data	Ratio
C. Ease	Star	***
Act. BW	68	84
Adj. WW	679	109
Adj. YW		102
ADG		89
SC	41	
Ultrasound		
%IMF	86	
REA	86	
FAT	88	

HB	GM	CED	BW	WW	YW	MILK	ME	HPG	CEM	STAY	MARB	REA	FAT	
EPD	111	39	18	-4.7	54	83	28	-7	13	12	20	0.42	-0.07	0.01
Top%	1	76	4	8	89	88	32	15	20	1	3	49	88	29

He is a calving ease deluxe bull with a big WW. Dam, Dina Z198, on 10 calves Avg. BW -99, WW-106, YW-104.

76 FORSTER BROADCAST 3307

D.O.B. 5/15/2023 REG# 4840118 TATTOO 3307 / FRR 100% AR A

FORSTER WIDESCREEN Z077
 FORSTER WIDESCREEN E084
 FORSTER CAMILLA Z082
FORSTER BROADCAST H291
 FORSTER HEATER Y153
 FORSTER DARLA B520
 FORSTER DARLA Y191
 RED SSS ENDORSE 639X
 FORSTER WIDESCREEN Z077
FORSTER SIERRA E049
 BASIN TREND SETTER 45S5
 3SCC SIERRA Z316
 3SCC SIERRA S61
 MPPA 105 DAM AGE 6

	Data	Ratio
C. Ease	Star	*
Act. BW	84	102
Adj. WW	672	108
Adj. YW		92
ADG		66
SC	38	
Ultrasound		
%IMF	125	
REA	88	
FAT	88	

HB	GM	CED	BW	WW	YW	MILK	ME	HPG	CEM	STAY	MARB	REA	FAT	
EPD	73	31	11	-0.3	64	88	31	-2	10	6	19	0.54	0.16	0.01
Top%	14	88	71	78	55	82	9	24	83	80	7	27	46	39

He has depth of body, rib, & flank. He also has good capacity. He has a big WW & scanned high for marbling.

79 FORSTER PRODUCT 3254

D.O.B. 6/1/2023 REG# 4840014 TATTOO 3254 / FRR 100% AR A

COLLIER FINAL PRODUCT B389
 COLLIER FINISHED PRODUCT
 COLLIER AMY B385
KUHNS FINISHED PRODUCT H032
 8001 KUHN'S CHEY BOND
 KUHN'S BAILEY BOND Y112
 KUHN'S BAILEY LOGAN 7032
 DEKAP RED DALLES 345
 RED BBCC PRESIDIO 5Z
 RED KBJ LASSIE 133X
FORSTER LAKETTE D136
 BECKTON EPIC U841 KM
 FORSTER LAKETTE Z110
 FORSTER LAKETTE X172
 MPPA 101 DAM AGE 7

	Data	Ratio
C. Ease	Star	***
Act. BW	76	92
Adj. WW	608	98
Adj. YW		95
ADG		91
SC	37.5	
Ultrasound		
%IMF	145	
REA	94	
FAT	75	

HB	GM	CED	BW	WW	YW	MILK	ME	HPG	CEM	STAY	MARB	REA	FAT	
EPD	83	58	13	-3.3	56	87	22	6	13	7	20	0.54	0.17	0.03
Top%	6	33	52	23	84	84	85	60	23	46	3	27	44	75

Calving ease deluxe bull with the 2nd highest marbling.

77 FORSTER RECON 3133

D.O.B. 5/9/2023 REG# 4839766 TATTOO 3133 / FRR 100% AR A

S A V RESOURCE 1441
 FORSTER RESOURCE D094
FORSTER RESOURCE G079
 FORSTER COPPER LASS 9082
 FORSTER LEGEND 8213
 FORSTER CALANDRA Z086
 FORSTER CALANDRA 9135
 RED PAT 4475
 FORSTER PAT 6140
FORSTER COUNTESS B042
 FORSTER COPPER QUEEN 2119
 RHRA GOLD RUSH 402 17T
 FORSTER COUNTESS 9039
 FORSTER COUNTESS 1161
 MPPA 94 DAM AGE 9

	Data	Ratio
C. Ease	Star	***
Act. BW	74	91
Adj. WW	542	87
Adj. YW		92
ADG		100
SC	41.5	
Ultrasound		
%IMF	105	
REA	90	
FAT	107	

HB	GM	CED	BW	WW	YW	MILK	ME	HPG	CEM	STAY	MARB	REA	FAT	
EPD	76	47	17	-3.9	50	79	23	-3	12	8	18	0.33	0.22	0.02
Top%	11	61	7	16	94	92	76	20	37	24	14	75	35	56

Calving ease deluxe bull. He has a long, level top with depth of body, rib, & flank. He is dark red and has real good feet.

80 FORSTER PRODUCT 3278

D.O.B. 6/10/2023 REG# 4840060 TATTOO 3278 / FRR 100% AR A

COLLIER FINAL PRODUCT B389
 COLLIER FINISHED PRODUCT
 COLLIER AMY B385
KUHNS FINISHED PRODUCT H071
 5L HOBO DESIGN 980-239Z
 KUHN'S BONITA E125
 KUHN'S DUCHESS A025
 5L BLOCKADE 2218-30B
 FORSTER BLOCKADE D051
 FORSTER PANSY Z011
FORSTER ALICE F024
 FORSTER EPIC Y011
 FORSTER ALICE C161
 FORSTER ALICE A152
 MPPA 103 DAM AGE 5

	Data	Ratio
C. Ease	Star	**
Act. BW	80	97
Adj. WW	634	102
Adj. YW		99
ADG		93
SC	42.5	
Ultrasound		
%IMF	110	
REA	98	
FAT	75	

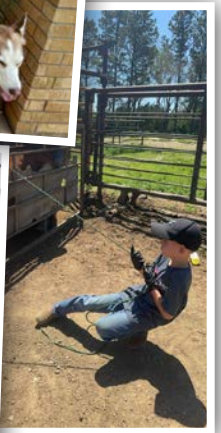
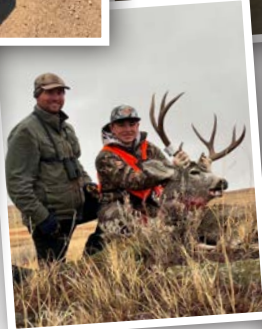
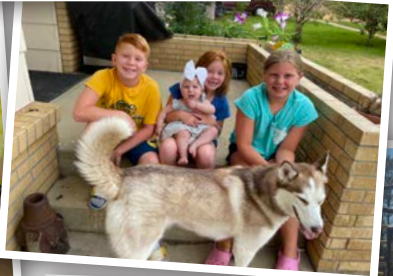
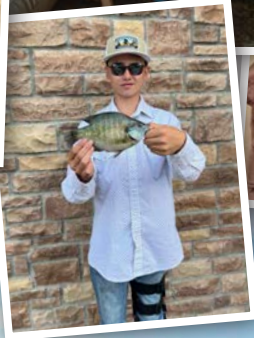
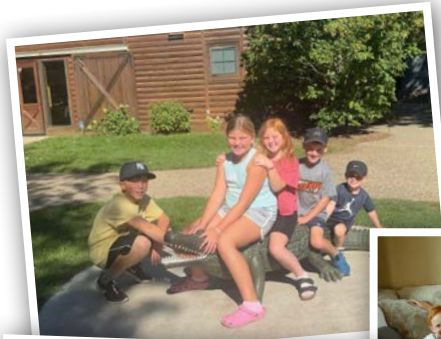
HB	GM	CED	BW	WW	YW	MILK	ME	HPG	CEM	STAY	MARB	REA	FAT	
EPD	60	53	15	-2.2	66	103	25	7	13	7	16	0.42	0.13	0.02
Top%	35	47	25	42	46	55	58	69	32	45	27	49	52	60

He is a long bodied, 2-star bull.



FR

“OUR CATTLE ARE A PART OF WHO WE ARE, NOT JUST WHAT WE DO.”



REF
SIRE



FORSTER HISTORY G025

D.O.B. 04-17-2019 REG# 4196110 TATTOO G025 / FRR 100% AR A

5L BLOCKADE 2218-30B
5L OPAL 656-2218
FORSTER BLOCKADE D057
FORSTER NORTH 9017
FORSTER CAMILLA 2045
FORSTER CAMILLA 8042
BECKTON CODY K1 P014
BECKTON CODY U659 K1
FORSTER COPPERQUEEN C123
FORSTER NORTHERN 7057
FORSTER COPPERQUEEN 9055
FORSTER COPPERQUEEN 5087

	Data	Ratio
C. Ease		
Act. BW	82	103
Adj. WW	741	115
Adj. YW		117
ADG		
SC		
Ultrasound		
%IMF	120	
REA	105	
FAT	170	

MPPA 102

	HB	GM	CED	BW	WW	YW	MILK	ME	HPG	CEM	STAY	MARB	REA	FAT
EPD	68	47	17	-3.9	86	132	28	11	10	8	18	0.29	0.53	0
Top%	23	52	8	16	6	11	34	83	75	28	12	72	8	24



Forster History G025 is long spined, has a wide top, deep body, thick muscled, and lots of volume. He is very easy keeping. Excellent disposition. His calves are consistently stamped by his phenotype. His pedigree is stacked top and bottom genetically to produce what he is, which he has proven. He throws moderate BW, heavy WW, gainability, carcass, and easy fleshing cattle.

REF
SIRE



OKCC RED DOMAIN 108J

D.O.B. 03-17-2021 REG# 4539115 TATTOO 108J / OKCC 100% AR A

BECKTON DOMINOR Z1 R610
BECKTON DOMINOR T122 Z1
BKT LARKABEL R038 WA
3SSC DOMAIN A163
BASIN HOBO 0545
3SSC EUCLA X723
BSKF EUCLA U278
BECKTON JULIAN GG B571
RED HILL B571
JULIAN 845
BECKTON BARMAID M554 CH
OKCC MISS PRIDE D157
5L SKYLINE X415-130X
OKCC MISS Z124
OKCC MISS X140

	Data	Ratio
C. Ease		
Act. BW	78	95
Adj. WW	642	104
Adj. YW		111
ADG		
SC		
Ultrasound		
%IMF		
REA		
FAT		

MPPA 100

	HB	GM	CED	BW	WW	YW	MILK	ME	HPG	CEM	STAY	MARB	REA	FAT
EPD	58	72	17	-1	79	132	28	7	14	7	15	0.45	0.35	0.03
Top%	36	17	10	62	14	11	34	63	23	42	39	45	20	70



Domain is a wide topped, long bodied bull with depth of rib & flank. He is thick made. His progeny are exhibiting the same traits. His sire is in the Genex line up. He produces easy fleshing cattle with muscle. The daughters are medium sized, easy fleshing cows with good feet and fantastic udders! Domain's dam side has some greats in her pedigree like Red Hill 845 & Beckton Julian B571. They are easy keeping, good gainability genetics.

REF
SIRE



FORSTER BEACON F056

D.O.B. 04-21-2018 REG# 4081006 TATTOO F056 / FRR 100% AR A

RED FLYING K GENERATOR 16U
FORSTER HEATER Y153
FORSER LORI 8113
FORSTER HEATER 517
BECKTON CODY U659 K1
FORSTER JOAN X007
FORSTER JOAN 8021
RED T-K ENERGIZER 13T
RED SSS ENDORSE 639X
RED SSS BELLE 612P
FORSTER TIDY BEE Z075
FORSTER GOLDENEY 2061
FORSTER TIDY BEE 5054
FORSTER TIDY BEE 2099

	Data	Ratio
C. Ease		
Act. BW	90	110
Adj. WW	840	120
Adj. YW		102
ADG		
SC		
Ultrasound		
%IMF	63	
REA	133	
FAT	95	

MPPA 107

	HB	GM	CED	BW	WW	YW	MILK	ME	HPG	CEM	STAY	MARB	REA	FAT
EPD	8	66	11	1	90	147	17	26	8	5	13	0.38	0.51	0.01
Top%	94	26	71	88	3	4	95	99	93	81	61	56	10	37



C - F056 - Forster Beacon F056 has a wide, long, level top with depth of body, rib, and flank. He is long bodied with good capacity and real good feet. His sire, Forster Heater 517, would fix feet. Beacon is consistent in throwing free moving, stylish cattle that excel in the feedlot and make very functional replacement females.

REF
SIRE



SODAK EPIC F747

D.O.B. 09-15-2018 REG# 4096050 TATTOO F747 / RM 100% AR A

	BECKTON EPIC R397 K		Data	Ratio
	SANDERSON EPIC JOURNEY		C. Ease	
	SANDERSON KARA		Act. BW	85 110
CBR EPIC 4144-6215	RED CROWFOOT MOONSHINE 2116Z		Adj. WW	611 108
	CBR MISS MONIE 8340-4144		Adj. YW	
	CBR RUMBELED 4391-8340		ADG	
	SODAK OSCAR 3406/T322		SC	
	SODAK OSCAR T322/W558			
SODAK PRINCESS Z087	SODAK EVA T741			
	CBR RUMBLER 3397-6316		Ultrasound	
	SODAK PRINCESS X035		%IMF	
	SODAK PRINCESS T151		REA	
			FAT	

MPPA 103

	HB	GM	CED	BW	WW	YW	MILK	ME	HPG	CEM	STAY	MARB	REA	FAT
EPD	77	33	12	1.1	65	104	25	10	16	6	19	0.14	0.18	0.01
Top%	14	75	63	89	56	55	60	77	7	60	11	92	37	44

Sodak F747 has a wide, long, level top. He has depth of body, rib, & flank and is well balanced. He has strong maternal traits & growth.



REF
SIRE



FORSTER HIGHLIGHT 1093

D.O.B. 04-25-2021 REG# 4540445 TATTOO 1093 / FRR 100% AR A

	FORSTER HEATER Y153		Data	Ratio
	FORSTER HEATER 517		C. Ease	
	FORSTER JOAN X007		Act. BW	80 101
FORSTER BEACON F056	RED SSS ENDORSE 639X		Adj. WW	706 108
	FORSTER TIDY BEE 2073		Adj. YW	114
	FORSTER TIDY BEE 5054		ADG	
	FORSTER NORTHERN 7057		SC	
	FORSTER NORTH 9017			
FORSTER CAMILLA Z045	FORSTER DIXIE 6058		Ultrasound	
	FORSTER CAMILLA 8042		%IMF	119
	FORSTER CAMILLA 6085		REA	118
			FAT	170

MPPA 102

	HB	GM	CED	BW	WW	YW	MILK	ME	HPG	CEM	STAY	MARB	REA	FAT
EPD	20	58	11	-1.3	75	120	21	20	10	6	14	0.53	0.2	0.01
Top%	88	35	74	57	24	25	84	98	70	72	62	31	38	34

Highlight is a long bodied, level topped bull. He is smooth fronted and travels freely will good feet. He is easy on the eyes. He produces performance and should make some nice daughters. His dam has had 11 calves. We have kept a few Herd Sires out of her. She is a flawless mama cow.



REF
SIRE



FORSTER RESOURCE G079

D.O.B. 04-26-2019 REG# 4196220 TATTOO G079 / FRR 100% AR A

	RITO 707 OF IDEAL 3407 7075		Data	Ratio
	S A V RESOURCE 1441		C. Ease	
	S A V BLACKCAP MAY 4136		Act. BW	84 103
FORSTER RESOURCE D094	FORSTER NORTHERN 7057		Adj. WW	744 116
	FORSTER COPPER LASS 9082		Adj. YW	111
	FORSTER COPPER LASS 5011		ADG	
	5L LEGEND 791-7065		SC	
	FORSTER LEGEND 8213			
FORSTER CALANDRA Z086	FORSTER CAMILLA 5176		Ultrasound	
	RHRA GOLD RUSH 402 177		%IMF	119
	FORSTER CALANDRA 9135		REA	113
	FORSTER CALANDRA 5235		FAT	117

MPPA 103

	HB	GM	CED	BW	WW	YW	MILK	ME	HPG	CEM	STAY	MARB	REA	FAT
EPD	50	50	16	-1.7	63	107	19	12	13	9	15	0.23	0.51	0.02
Top%	51	48	15	50	61	48	91	86	37	27	39	82	9	60

Highlight is a long bodied, level topped bull. He is smooth fronted and travels freely will good feet. He is easy on the eyes. He produces performance and should make some nice daughters. His dam has had 11 calves. We have kept a few Herd Sires out of her. She is a flawless mama cow.



REF
SIRE



BECKTON SCAMP H156 W6

D.O.B. 03-11-2020 REG# 4377391 TATTOO H156 / BKT 100% AR A

		Data	Ratio
BECKTON SCAMP E175 N5	BECKTON SCAMP X458 H3	C. Ease	
	BECKTON SCAMP B720 L4	Act. BW	63 103
	BECKTON LARKABA Y448 L	Adj. WW	567 114
	BECKTON NEBULA T398 V3	Adj. YW	123
BECKTON MINERVA E078 W	BECKTON BELGA W103 N	ADG	
	BECKTON BELGA T551 EP	SC	
	BECKTON WARRIOR Y108 E5	%IMF	90
	BECKTON C695 W6	REA	111
MPPA 107	BECKTON LANA Y033 W	FAT	106
	BECKTON WARRIOR Y108 E5		
	BECKTON MINERVA C549 W		
	BECKTON MINERVA Y385 N		

	HB	GM	CED	BW	WW	YW	MILK	ME	HPG	CEM	STAY	MARB	REA	FAT
EPD	34	56	18	-5.4	60	105	42	17	10	8	15	0.63	-0.2	0.03
Top%	74	38	7	6	73	53	1	95	68	35	38	19	93	70



Beckton Scamp H156 is a very long bodied, high libido bull that is dark red. Produces low BW, gainability, high marbling offspring.

REF
SIRE



FORSTER B-RAD 1025

D.O.B. 04-18-2021 REG# 4540307 TATTOO 1025 / FRR 100% AR A

		Data	Ratio
RED ARO 8113F	BIEBER ROLLIN DEEP Y118	C. Ease	
	JEFFRIES DEPTH CHARGE 356B	Act. BW	80 112
	BASIN SAM 8948	Adj. WW	638 108
	RIDGE DIRECT KING 9054	Adj. YW	115
FORSTER CAMILLA G206	RED ARO QUEEN 105	ADG	
	RED ARO MISS GAME PLAN 912	SC	
	FORSTER MOON D156	%IMF	101
	FORSTER COPPERQUEEN B113	REA	109
MPPA 103	FORSTER CAMILLA E052	FAT	90
	5L BLOCKADE 2218-30B		
	FORSTER CAMILLA 8042		

	HB	GM	CED	BW	WW	YW	MILK	ME	HPG	CEM	STAY	MARB	REA	FAT
EPD	18	52	13	-1.4	67	114	24	20	12	7	12	0.24	0.55	0.03
Top%	88	44	51	55	48	34	69	98	41	40	78	81	7	75

B-rad is a moderate framed bull. He is thick muscled from top to bottom and front to back. He has good feet.

REF
SIRE



FORSTER RECON 1207

D.O.B. 05-04-2021 REG# 4540675 TATTOO 1207 / FRR 100% AR A

		Data	Ratio
FORSTER RESOURCE G079	S A V RESOURCE 1441	C. Ease	
	FORSTER RESOURCE D094	Act. BW	65 86
	FORSTER COPPER LASS 9082	Adj. WW	738 113
	FORSTER LEGEND 8213	Adj. YW	104
FORSTER COPPERQUEEN F025	FORSTER CALANDRA Z086	ADG	
	FORSTER CALANDRA 9135	SC	
	BECKTON CODY U659 K1	%IMF	111
	FORSTER CODY A412	REA	94
MPPA 102	FORSTER FLO JO Y073	FAT	106
	RHRA GOLD RUSH 402 17T		
	FORSTER COPPERQUEEN 9075		
	FORSTER COPPERQUEEN 1044		

	HB	GM	CED	BW	WW	YW	MILK	ME	HPG	CEM	STAY	MARB	REA	FAT
EPD	69	41	16	-2.1	62	98	27	7	12	9	17	0.4	0.2	0.04
Top%	21	65	16	43	66	67	43	64	39	22	18	52	38	77

He is a well-balanced, fancy looking bull. We used him on heifers with no issues.

REF
SIRE



FORSTER WIDESCREEN G292

D.O.B. 04-14-2019 REG# 4196630 TATTOO G292 / FRR 100% AR A

		Data	Ratio
FORSTER WIDESCREEN C193	RED SSS ENDORSE 639X	C. Ease	
	FORSTER WIDESCREEN Z077	Act. BW	78 97
	FORSTER PANSY 8076	Adj. WW	644 100
	FORSTER HIGH BEAM 1030	Adj. YW	103
FORSTER ALINA B032	FORSTER DIXIE 6058	ADG	
	FORSTER DIXIE 2018	SC	
	BECKTON CODY K1 P014	%IMF	96
	FORSTER ALINA 4020	REA	106
MPPA 97	BKT PINE MARIE P351 EP	FAT	95
	RED BRYLOR TIN BAILEY 505M		
	FORSTER ALINA 4020		
	MS FORSTER PAT 6054		

	HB	GM	CED	BW	WW	YW	MILK	ME	HPG	CEM	STAY	MARB	REA	FAT
EPD	81	29	14	-3	69	104	23	5	11	7	20	0.39	0	0
Top%	10	81	37	28	42	55	73	52	61	55	4	54	68	23



He has a wide, long, level top and depth of body, rib, & flank. He is good footed and thick made. He is easy keeping and should produce some nice daughters.

REF SIRE **K** **FORSTER BROADCAST H291**
 D.O.B. 05-07-2020 REG# 4288613 TATTOO H291 / FRR 100% AR A

	Data	Ratio
FORSTER WIDESCREEN E084	Act. BW 82	102
FORSTER CAMILLA Z082	Adj. WW 734	108
FORSTER DARLA B520	Adj. YW 111	
FORSTER DREAM BEE E194	ADG	
	SC	
	Ultrasound	
	%IMF 84	
	REA 124	
	FAT 102	

	HB	GM	CED	BW	WW	YW	MILK	ME	HPG	CEM	STAY	MARB	REA	FAT
EPD	65	36	12	-0.7	61	92	32	4	11	5	18	0.47	0.29	0.01
Top%	27	72	62	67	70	76	10	48	57	75	12	42	27	41

He is a wide topped bull with depth of body, rib, & flank. He is thick muscled and long bodied. He produces muscle & nice females. Dam has had 8 calves.

REF SIRE **L** **FORSTER STRYDER H050**
 D.O.B. 04-20-2020 REG# 4288121 TATTOO H050 / FRR 100% AR A

	Data	Ratio
FORSTER SEEKER F156	Act. BW 84	104
FORSTER DREAM BEE E194	Adj. WW 853	127
	Adj. YW 118	
	ADG	
	SC	
	Ultrasound	
	%IMF 73	
	REA 108	
	FAT 117	

	HB	GM	CED	BW	WW	YW	MILK	ME	HPG	CEM	STAY	MARB	REA	FAT
EPD	39	61	8	0.3	75	119	37	21	13	5	16	0.41	0.15	0
Top%	65	31	91	81	23	25	1	98	35	80	29	51	43	26

He has a wide, long, level top and depth of body, rib, & flank. He is attractive looking and free moving. There are pretty good #'s on this bull.

REF SIRE **M** **KUHNS FINISHED PRODUCT H071**
 D.O.B. 02-28-2020 REG# 4350109 TATTOO H071 / JKRA 100% AR A

	Data	Ratio
COLLIER FINISHED PRODUCT	Act. BW 83	105
KUHNS BONITA E125	Adj. WW 717	110
	Adj. YW 107	
	ADG	
	SC	
	Ultrasound	
	%IMF 123	
	REA 101	
	FAT 104	

	HB	GM	CED	BW	WW	YW	MILK	ME	HPG	CEM	STAY	MARB	REA	FAT
EPD	56	61	14	-1.6	71	108	26	8	16	8	14	0.41	0.23	0.03
Top%	42	31	34	52	35	46	51	67	8	34	62	51	35	72

Kuhn Finished Product H071 is long, deep, smooth, attractive, and dark red with a nice disposition.

REF SIRE **N** **KUHNS FINISHED PRODUCT H032**
 D.O.B. 02-22-2020 REG# 4349925 TATTOO H032 / JKRA 100% AR A

	Data	Ratio
COLLIER FINISHED PRODUCT	Act. BW 86	105
KUHNS BAILEY BOND Y112	Adj. WW 679	104
	Adj. YW 105	
	ADG	
	SC	
	Ultrasound	
	%IMF 106	
	REA 101	
	FAT 138	

	HB	GM	CED	BW	WW	YW	MILK	ME	HPG	CEM	STAY	MARB	REA	FAT
EPD	84	57	15	-4.7	62	103	22	14	17	8	20	0.43	0.24	0.04
Top%	8	34	26	9	65	56	79	91	6	30	5	47	28	79

Kuhn Finished Product H032 is long bodied, deep sided, has a square hip, and nice disposition.



Sire to Ref. M and Ref. N: Collier Finished Product



REF
SIRE

0

SHAG MAXING 945

D.O.B. 02-15-2019 REG# 4188754 TATTOO 945 / SHAG 100% AR A

RED CROWFOOT 6253S
RED ML MAX 862U
RED BAR-X MISS LINETT 151K
RED FLYING K MAX 159Y
RED FLYING K ACE 9R
RED FLYING K ANITA 764T
RED FLYING K ANEXA 4M
JSG UNO 101W
JSG DANNY BOY 701
JSG MISS BOOMER 724
ARO MS UNO 273
5L GRAND EXPRESS 453-5655
ARO LADY GRAND 806
ARO MS. CANNON 406

Data		Ratio
C. Ease		
Act. BW	85	
Adj. WW	598	
Adj. YW		
ADG		
SC		
Ultrasound		
%IMF	114	
REA	92	
FAT	115	

MPPA 101

	HB	GM	CED	BW	WW	YW	MILK	ME	HPG	CEM	STAY	MARB	REA	FAT
EPD	137	39	17	-3.7	45	74	24	-12	13	11	25	0.38	-0.09	0.01
Top%	1	65	10	19	96	95	58	5	27	7	1	56	85	34



Shag Maxing 945 is a long bodied, smooth made, clean fronted bull. He is an ET bull we bought to use on heifers.

REF
SIRE

P

FORSTER B-RAD 1042

D.O.B. 04-20-2021 REG# 4540343 TATTOO 1042 / FRR 100% AR A

BIEBER ROLLIN DEEP Y118
JEFFRIES DEPTH CHARGE 556B
BASIN SAM 8948
RED ARO 8113F
RIDGE DIRECT KING 9054
RED ARO QUEEN 105
RED ARO MISS GAME PLAN 912
FORSTER HEATER Y153
FORSTER HEATER B518
FORSTER COPPERQUEEN X047
FORSTER COPPERQUEEN G156
BASIN HOBQ 3003
FORSTER COPPERQUEEN 6156
MS FORSTER PRESIDIO6117

Data		Ratio
C. Ease		
Act. BW	65	91
Adj. WW	647	110
Adj. YW		112
ADG		
SC		
Ultrasound		
%IMF	126	
REA	100	
FAT	142	

MPPA 104

	HB	GM	CED	BW	WW	YW	MILK	ME	HPG	CEM	STAY	MARB	REA	FAT
EPD	75	69	18	-5.7	46	81	27	10	13	11	19	0.72	-0.1	0
Top%	16	23	5	4	96	90	37	81	34	5	10	13	86	27



He is a well-balanced bull all around. We have used him on heifers with great success.



PARAMOUNT

Now is a paramount time to verify your genetics in the Feeder Calf Certification Program. The Red Angus Live Animal Specification, recognized by the USDA, acknowledges **Red Angus are genetically Angus and meet requirements to be included in many Angus branded-beef programs.**



**Genetics, not hide color,
qualify an animal as Angus.**

Visit RedAngus.org

RED ANGUS
RANCH TESTED. RANCHER TRUSTED.

Congratulations on your bull purchase!

Welcome to the Red Angus family. If this is your first purchase of Red Angus genetics, we hope you find the addition to your breeding program a move in a positive direction. Research has shown that Red Angus-sired calves are more in demand than ever before! Steers – and maybe more importantly their heifer mates – continue to be sought after in the marketplace with buyers willing to pay a premium for these genetics.

If you are a repeat customer, we appreciate your dedication and are pleased that the cattle are making a profitable difference in your breeding program.

The Feeder Calf Certification Program (FCCP) is the cornerstone of the Red Angus Association of America's marketing programs. At the core of the FCCP is genetic verification with the ability to provide age and source information. Enrollment in our FCCP program clearly tells the world that the calf is a minimum of 50% Red Angus, and thus could be identified for extra premiums on sale day. Who doesn't want more money?

Ready to sign up? The process is simple and affordable, with no enrollment fee and only the cost of the tag option you select. See the back of this flyer for details and steps to enroll.

Enroll your calves today in FCCP!

Transfer every bull.

Your seedstock supplier should transfer every bull you purchase into your RAAA herd inventory. This is a key step because the FCCP is based on the use of registered Red Angus bulls. Visit with your genetic suppliers to confirm they transfer your new bulls into your operation's name.

Did you purchase Red Angus semen?

An invoice detailing that purchase will be necessary to complete a tag purchase. Make sure you keep a copy of this information to submit to the value-added department when enrolling.

Did you buy heifers bred to a Red Angus bull?

Calves out of commercial heifers bred to registered Red Angus bulls also qualify for the FCCP program, but ONLY if the seller completes the

purchased bred commercial female form. This form is the key component in enrolling the resulting calves into the FCCP. Ask your supplier to assist with this form, which is available on RedAngus.org.

Ready to purchase FCCP tags?

To order tags for your upcoming calf crop, the process is simple, but does require contacting the value-added department. After answering a few questions regarding your management practices and genetics, an FCCP tag order will be placed on your behalf. It is imperative that the calves be tagged at the ranch of origin. The FCCP program has been a widely used third-party verified program for more than 25 years. We are excited to assist you on boosting your return on investment with Red Angus genetics.

Feeder Calf Certification Program & Allied Access Enrollment Checklist

Red Angus Marketing Programs have been delivering results for nearly two decades, combining the value of superior genetics with access to export markets and premium product lines, while allowing Red Angus customers to build strong reputations.

The Feeder Calf Certification Program (FCCP) was the industry's original USDA Process Verified Genetic, Source and Age Verification program.

Allied Access (AA) provides solutions for crossbreeding programs by delivering source & age verification, without the genetic restriction. AA delivers the flexibility for Red Angus customers using multi-breed rotations, hybrids or composites to capture heterosis.



Feeder Calf Certification Program

- Traceability to at least 50% Red Angus bloodlines
- Source verified to ranch of origin
- Group age verified



processverified.usda.gov



Allied Access

- Source verified to ranch of origin
- Group age verified



processverified.usda.gov

- Make the call.**
Contact RAAA and answer a few simple questions. The evaluation takes approximately 15 minutes and there is NO ENROLLMENT FEE.
- Provide special documentation** (only when needed).
For AI-sired calves, provide receipts of semen purchases/collections. In the case of purchased bred females, a signed invoice/bill of sale stating the number of head & breeding status (including service sires).
- Purchase tags.**
Upon completing the evaluation, tamper-proof tags will be shipped to the ranch – visual (dangle) tags, EID-only buttons or a correlating combination visual tag w/ button & RFID. Customers have the option to add management numbers or a line of text to the tag.
- Tag calves.**
Tag calves at anytime – birth, branding, preconditioning, weaning – but they must be tagged before they leave the ranch of origin. Leftover ear tags can be used on the next enrolled calf crop.
- Fill out Enrollment Agreement.**
After calves are tagged, return the Enrollment Agreement along with a copy of the first page of your calving record to RAAA. The Enrollment Agreement is mailed when the tags are shipped to the ranch and is available online at: RedAngus.org/marketing.
- Receive Certificate of Compliance.**
RAAA mails a COC after the Enrollment Agreement and first page of your calving record have been processed. Additional copies of COCs can be sent to buyers, feedyards, livestock markets, etc. All COCs are available online at RedAngus.org via the ASV Tag Search tab.
- Call to enroll each calf crop.**

Enroll in the Feeder Calf Certification Program
and order your tags today!

RED ANGUS
RANCH TESTED. RANCHER TRUSTED.

Value Added Department
940-477-4593
tags@redangus.org

A new arrangement between the Red Angus Association of America and IMI Global, a division of Where Food Comes From, Inc., will allow cattle producers who take advantage of Red Angus value-added programs to more easily utilize IMI Global verification services. Cattle producers who enroll in Red Angus value-added programs will now have the capability to start the application process for IMI Global claims on the same phone call, saving valuable time and streamlining the enrollment process. Because the FCCP is already providing verification for age, source and genetics, producers who enroll calves in the program can use the same program-compliant EID as the identifier for Red Angus and IMI Global programs.



KENNY FORSTER & FAMILY
 8285 30TH ST SW
 RICHARDTON, ND 58652



*Shop
 at your
 convenience!*

C 701.290.2450 · H 701.974.2450
 FORSTERREDANGUS@YAHOO.COM

WWW.FORSTERREDANGUS.COM

REASONS TO BUY FROM FORSTER RED ANGUS

- GENETICALLY ENGINEERED FOR OVER 50 YEARS FOR YOUR BOTTOM LINE
- LONG AGE BREEDING BULLS – COVER MORE COWS
- FAMILY OPERATION

REASONS TO BUY THROUGH ONLINE AUCTION

- SHOP AT YOUR CONVENIENCE
- NO PRESSURE – VIEW BULLS, GO HOME, AND DECIDE WHAT TO BID ON
- VIEW BULLS AT FORSTER RANCH ON YOUR TIME FROM FEBRUARY 11-16, 2025
- EASY ACCESS TO FORSTER RANCH TO VIEW BULLS IN RICHARDTON, ND
- FORSTER RED ANGUS CAN ASSIST WITH BIDDING
- WEATHER IS LESS CONCERNING – 6 DAYS TO VIEW BULLS & BID



ANNUAL PRODUCTION SALE

FEBRUARY 11-16, 2025

SELLING 80 COMING 2-YEAR-OLD BULLS

Online Auction ONLY



www.dvauction.com

“OUR CATTLE ARE A PART OF WHO WE ARE, NOT JUST WHAT WE DO.”